

**This document contains:**

- The Event Covid-19 risk assessment and risk mitigation plan in accordance with the [FEI Policy for Enhanced Competition Safety during the Covid-19 Pandemic](#)
- The Event Approved Schedule

*Given the current covid-19 situation, please note that the FEI's approval of a Schedule should not be taken as an absolute guarantee that the Event will definitely go ahead. The decision whether the Event can take place must be made by the OC and NF in close consultation with the applicable domestic government and public health authorities. It is the responsibility of each Participant to check the status of the Event prior to planning his/her travel to the Event.*

**Risk assessment for COVID-19: Addendum for sporting events.**

<b>Additional risk of COVID-19 to the sporting event</b>	<b>Yes (1)/No (0)</b>	<b>Score</b>
<b>Will the event be held in a country that has documented active local transmission of COVID-19 (community spread)?</b>	1	1
<b>Will the event be held in a single venue or multiple venues/cities/countries?</b> <i>(single venue = 0; multiple venues = 1)</i>	0	0
<b>Will the event include international participants (athletes and spectators) from countries that have documented active local transmission of COVID-19 (community spread)?</b> <i>(NB: if the Events does not involve spectators, please clarify this in the comments to the questions in relation to spectators in the "Mitigation Checklist" sheet)</i>	1	1
<b>Will the event include a significant number of participants (athletes or spectators) at higher risk of severe COVID-19 disease (e.g., people over 65 years of age or people with underlying health conditions)?</b>	0	0
<b>Will the event include sports that are considered at higher risk of spread for COVID-19 (eg, contact sports)?</b>	0	0
<b>Will the event be held indoors?</b> <i>(Yes = 1; No = 0)</i>	0	0
<b>Total COVID-19 risk score</b>		<b>2</b>

**Mitigation Checklist.**

Topic	Key consideration	Score Yes/Completed (2), Maybe/In progress (1), No/Not considered (0)	Weighting	Total score	Comments
<b>Understanding of the overview of the current COVID-19 situation by the event organizers</b>	Have the relevant OC and responsible staff been informed about the <b>latest available guidance on the COVID-19 outbreak</b> (official web resources available from WHO, CDC, ECDC, UN, local public health authorities)? And are the OC and staff concerned committed to following the available guidance?	2	1	2	
	Is the OC aware of global and local daily situation reports as provided by WHO or local public health authorities?	2	1	2	
	Do the OC and responsible staff understand the risks and transmission routes of COVID-19, the steps that Event attendees can take to limit spread, the recognized best practices (including respiratory etiquette, hand hygiene, physical distancing, etc.), and the travel restrictions adopted by different countries that may affect the Event?	2	1	2	
<b>Event emergency preparedness</b>	Has a <b>contingency medical response plan for COVID-19</b> been developed for the Event?	2	3	6	

# FEI APPROVED SCHEDULE

## STRZEGOM (POL) 11-15 August 2021

and response plans	Does the contingency medical response plan include <b>information about how attendees should interact with the host country healthcare system</b> (e.g. hotline/helpline telephone number, medical teams and first-aid points for the Event, local health care system)?	2	3	6	
	Is there an <b>Emergency COVID-19 Outbreak Response Coordinator/Team</b> in the OC or other structure for the Event with defined roles and responsibilities, coordinating the health preparedness and response planning for the outbreak?	2	2	4	
	Has the host country or OC requested <b>support from WHO and/or local public health authorities</b> ?	2	3	6	
	<b>Has the OC acquired the following supplies to help reduce the risk of transmission of COVID-19?</b>				
	Personal protective equipment (e.g. masks, gloves, gowns) for onsite medical personnel	2	3	6	
	Hand sanitizer and alcohol rubs/gels, tissues, frequently replaced soap canisters and closed bins for safe disposal of hygienic materials (e.g. tissues, towels, sanitary products) in washrooms and changing rooms	2	3	6	
	Hand sanitizers and alcohol rubs for all entrances and throughout the venue	2	3	6	
	<b>If a person feels unwell/ shows symptoms of an acute respiratory infection during the Event:</b>				
	Is there a procedure for athletes or spectators to clearly identify <b>whom to contact and how to do so</b> if they or other Event participants feel unwell?	2	3	6	
	Is there a protocol on whom the OC should contact in the host country to report	2	3	6	

**FEI APPROVED SCHEDULE**  
**STRZEGOM (POL) 11-15 August 2021**

	suspected cases and request testing and epidemiological investigations?				
	Are <b>first-aid services or other medical services</b> in-place and equipped to support patients with respiratory symptoms?	2	2	4	
	Are there <b>isolation rooms or mobile isolation units</b> available onsite?	2	2	4	
	Are there any <b>designated medical facilities</b> that manage patients with COVID-19 infection in the host country?	2	2	4	
	Are there <b>transportation services with trained medical professionals</b> available to transport critically ill patients with severe acute respiratory infections to a hospital or to evacuate them from the host country, if necessary?	2	2	4	
	Has a <b>cleaning schedule</b> been developed to ensure the venue is clean and hygienic – wiping surfaces and any equipment regularly with disinfectant is strongly recommended (before, during and after the event and between each round of competition)?	2	3	6	
	Are there established <b>screening measures</b> , including temperature checks in place for participants at the point of entry, venues, routes and on-site medical facilities (first-aid points)? (Please specify in Comments what these screening measures include)	2	3	6	
	Is the host country conducting COVID-19 <b>laboratory diagnostic tests</b> ? (If Yes, please specify in comments the type of COVID-19 diagnostic test used)	2	3	6	RT-PCR genetic test / Genetic screening test / Antigen test
	Does the host country have a <b>national public health emergency preparedness and response plan</b> that can address severe respiratory diseases, including COVID-19?	2	2	4	

**FEI APPROVED SCHEDULE  
STRZEGOM (POL) 11-15 August 2021**

	Is there a <b>preliminary agreement by the host country to provide care</b> for any COVID-19 cases connected with the Event?	2	3	6	
	If the Event is for a duration of 14 days or longer, does the medical response plan for the event include resources and protocols for managing all public health interventions that would be necessary and supporting the national public health authorities if participants are infected and become unwell at the Event? (If the event is for less than 14 days, please score 0)	0	3	0	
	If the Event is for less than 14 days, does the medical response plan include protocols for OCs to notify all participants of possible exposure to COVID-19 if the OCs are made aware of any suspected or confirmed cases that attended the Event? (If the event is for 14 days or longer, please score 0)	0	3	0	
<b>Stakeholder and partner coordination</b>	Is there an established mechanism for collaboration and coordination between <b>the health and security sectors</b> , which is considered as crucial?	2	2	4	
	Are there agreed, clear and easily understood processes in place for <b>reporting to external multi-sectoral stakeholders</b> (including surveillance authorities, WHO, CDC, ECDC, etc.) and disseminating risk communication messages (Media)?	2	2	4	
<b>Command and control</b>	Is there a decision-making authority/body and an agreed procedure to <b>modify, restrict, postpone or cancel the</b> Event related to the evolving COVID-19 outbreak?	2	3	6	
	Are there arrangements to activate a <b>strategic health operation centre</b> if there are suspected COVID-19 cases in connection with the Event?	0	2	0	

**FEI APPROVED SCHEDULE**  
**STRZEGOM (POL) 11-15 August 2021**

	Have the OC and staff undergone training and exercises on personal safety procedures and emergency mitigation measures (including those specifically listed in this checklist)?	2	3	6	
<b>Risk communication</b>	Is there a <b>risk communication strategy</b> for the Event in regard to COVID-19?	2	3	6	
	Is there a <b>designated person(s) to lead media</b> activities and tasked with managing all external communications with national and international government officials, the general public, and the media? (If yes, please identify the spokesperson in comments)	2	2	4	
	Has there been <b>monitoring of national and international media and social media</b> established for <b>rumours</b> to be able to counter them early? (Please explain in the comments what protocols are in place for counter messaging)	2	2	4	
	Has coordination been set up with major official media channels and social media sites such as Twitter, Facebook and Instagram so that messaging can be coordinated with, and assisted by, the platforms to provide targeted messaging from OCs (including messaging to counter fake news and rumours, and proactive messaging about the status of the sporting event, including changes)?	2	2	4	
<b>Public health awareness of COVID-19 before and during the event</b>	Has <b>public health advice</b> on clinical features of COVID-19, preventive measures, especially respiratory etiquette, hand hygiene practices, and physical distancing, been shared with all staff involved in the Event, athletes, the public, and personnel of all relevant stakeholders?	2	3	6	

**FEI APPROVED SCHEDULE**  
**STRZEGOM (POL) 11-15 August 2021**



	Has information on the <b>at-risk populations</b> been provided to all athletes, the public and others so they may make an informed decision on their attendance based on their personal risks?	2	3	6	
	Has public advice included information on the meaning of the following <b>measures: quarantine, self-isolation and self-monitoring?</b>	2	2	4	
<b>Surge capacity</b>	<b>Are there any surge arrangements in place in the event of a public health emergency during the Event - (i.e. suspected and confirmed cases of COVID-19?)</b>				
	Do these surge arrangements include funding for mitigation measures?	2	3	6	
	Do these surge arrangements include stockpiles of equipment (e.g. personal protective equipment, etc.)	2	3	6	
	Do these surge arrangements include training of extra staff?	2	2	4	
	Do these surge arrangements include volunteers?	0	2	0	
<b>Specific mitigation measures</b>	Will there be <b>daily health checks</b> of athletes/competitors?	2	2	4	
	Will the <b>athletes be separated from other groups</b> , such as officials, support staff and spectators, to limit transmission?	2	2	4	
	Are there measures in place to <b>limit the sharing of equipment, water bottles, towels, etc.?</b>	2	3	6	
	Will athletes be given closed <b>containers to allow for the safe disposal or storing of all hygienic materials</b> (e.g. tissues, towels, etc.)?	0	3	0	
	Will the Event have <b>designated seating</b> for all spectators?	2	3	6	



**FEI APPROVED SCHEDULE**  
**STRZEGOM (POL) 11-15 August 2021**



	Does the designated <b>seating provided allow for physical distancing</b> between spectators (minimum of 1 metre)?	2	2	4	
	Have <b>pre-travel health checks</b> been performed on all athletes to ensure underlying co-morbidities, medications, allergies, etc. are documented?	0	2	0	

<b>Sum of mitigation measures</b>	196
<b>Total mitigation score (%)</b>	<b>89</b>

196



# FEI APPROVED SCHEDULE STRZEGOM (POL) 11-15 August 2021



The decision matrix takes the risk score and the mitigation score to provide a colour determination. This colour determination identifies the total risk of transmission and further spread of COVID-19 in relation to the mass gathering. The "Colour Determination" key below the decision matrix describes the total risk for each colour.

<b>Total COVID-19 risk score (from "Risk Assessment" Tab)</b>	<b>2</b>
<b>Total mitigation score (from "Mitigation Checklist" Tab)</b>	<b>89</b>

## Risk Vs. Mitigation Matrix

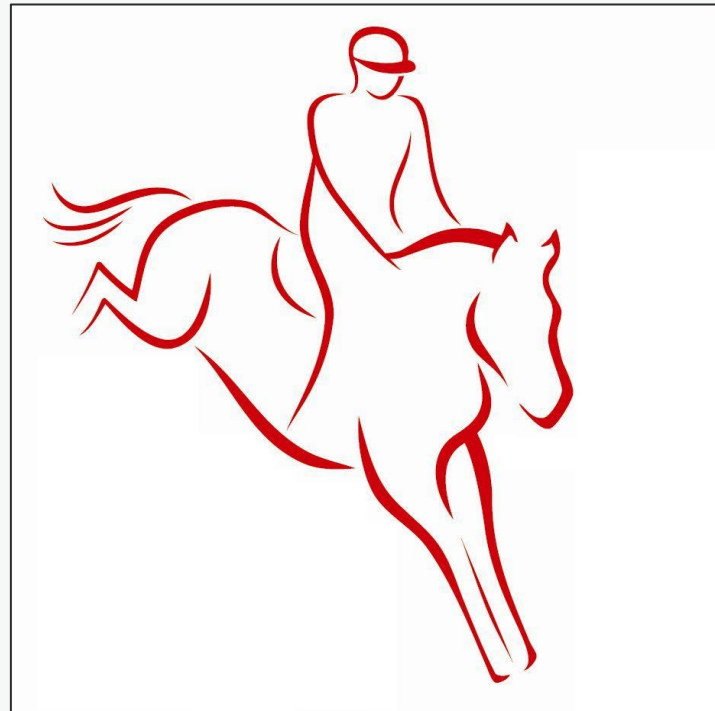
<b>Total Risk Assessment Score</b>	Very Prepared to Mitigate COVID-19 Impacts (76-100)	Somewhat Prepared to Mitigate COVID-19 Impacts (51-75)	Somewhat Unprepared to Mitigate COVID-19 Impacts (26-50)	Very Unprepared to Mitigate COVID-19 Impacts (0-25)
0 - Negligible	<b>Very low</b>	<b>Very low</b>	<b>Very low</b>	<b>Very low</b>
1 - Very Low Risk	<b>Very low</b>	<b>Very low</b>	<b>Low</b>	<b>Low</b>
2 - Low Risk	<b>Low</b>	<b>Low</b>	<b>Low</b>	<b>Moderate</b>
3 - Moderate Risk (low-moderate)	<b>Low</b>	<b>Moderate</b>	<b>Moderate</b>	<b>Moderate</b>
4 - Moderate Risk (high-moderate)	<b>Moderate</b>	<b>Moderate</b>	<b>High</b>	<b>Very High</b>
5 - High Risk	<b>High</b>	<b>High</b>	<b>Very High</b>	<b>Very High</b>
6 - Very High Risk	<b>Very High</b>	<b>Very High</b>	<b>Very High</b>	<b>Very High</b>

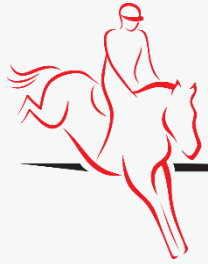
KEY FOR COLOUR DETERMINATION OF OVERALL RISK	
<b>VERY LOW</b>	Overall risk of transmission and further spread of COVID-19 in relation to the Event is considered <u>very low</u> .
<b>LOW</b>	Overall risk of transmission and further spread of COVID-19 in relation to the Event is considered <u>low</u> . Recommend checking whether mitigation measures can be strengthened.
<b>MODERATE</b>	Overall risk of transmission and further spread of COVID-19 in relation to the Event is considered <u>moderate</u> . Recommend <u>significant</u> efforts to improve mitigation measures or reduce risk of transmission (decrease risk assessment score).
<b>HIGH</b>	Overall risk of transmission and further spread of COVID-19 in relation to the Event is considered <u>high</u> . Recommend <u>significant</u> efforts to improve <u>both</u> mitigation measures and reduce risk of transmission (decrease risk assessment score).
<b>VERY HIGH</b>	Overall risk of transmission and further spread of COVID-19 in relation to the Event is considered <u>very high</u> .

# FEI European Pony Championships - Strzegom 2021

\*\*\*\*\*

## RISK MITIGATION PLAN





# Introduction

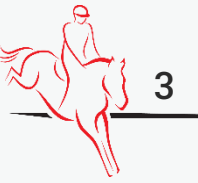
- Due to Covid-19 pandemic, we kindly ask you to familiarize with this document to minimise the risk of infection.
- While following these Guidelines is aimed to reduce the risk of COVID-19 infection during the competition, the risk is not eliminated.





# Introduction

---



- Every Participant of the event is obliged to familiarize with these Guidelines. Negligence of acknowledgment of the Guidelines doesn't relive from the duty of following the rules
- All the Participants of the event (excluding Organiser's employees) are taking part voluntarily and at their own responsibility.
- All Participants are required to comply with the rules of social coexistence and conduct in accordance with applicable laws and regulations of these Guidelines and other regulations in force at the competition, established by the Organiser.
- All deciding to take part in the event (in any role) and allowed to participate in the event by Organiser during the pandemic are doing so at their own risk.
- The Organising Committee doesn't take any responsibility for infection with Covid-19 of anyone taking part in the event.

# + Participant of the event

A Participant of the event is a person whose presence on the showground is essential for the sports competition, in particular:

- Competitors
- Supporting personnel - trainer, groom, horse owner and a person responsible for a minor athlete
- Person responsible for horse transport
- Officials
- Event staff
- Security staff
- TV operators
- Media representatives
- Spectators

# + Restrictions of participation

The following restriction of participation in the event must be followed:

- The event takes place with a limited number of spectators - in accordance with current regulations in Poland.
- All participants of the event must wear a mask that covers the mouth and nose or keep 1,5m of social distance
- The Press Office will work only remotely (online). The number of Press Office Staff will be limited.
- The Organiser is going to issue a limited number of PRESS and PHOTO accreditations – two accreditations per editorial team /except for Official photographers of the Organiser and the FEI/.



# + The procedure of entering the showground

**BEFORE ENTERING TO THE VENUE YOU HAVE TO PRESENT /APPLIES TO ALL AGES/:**

## **Covid-19 tests:**

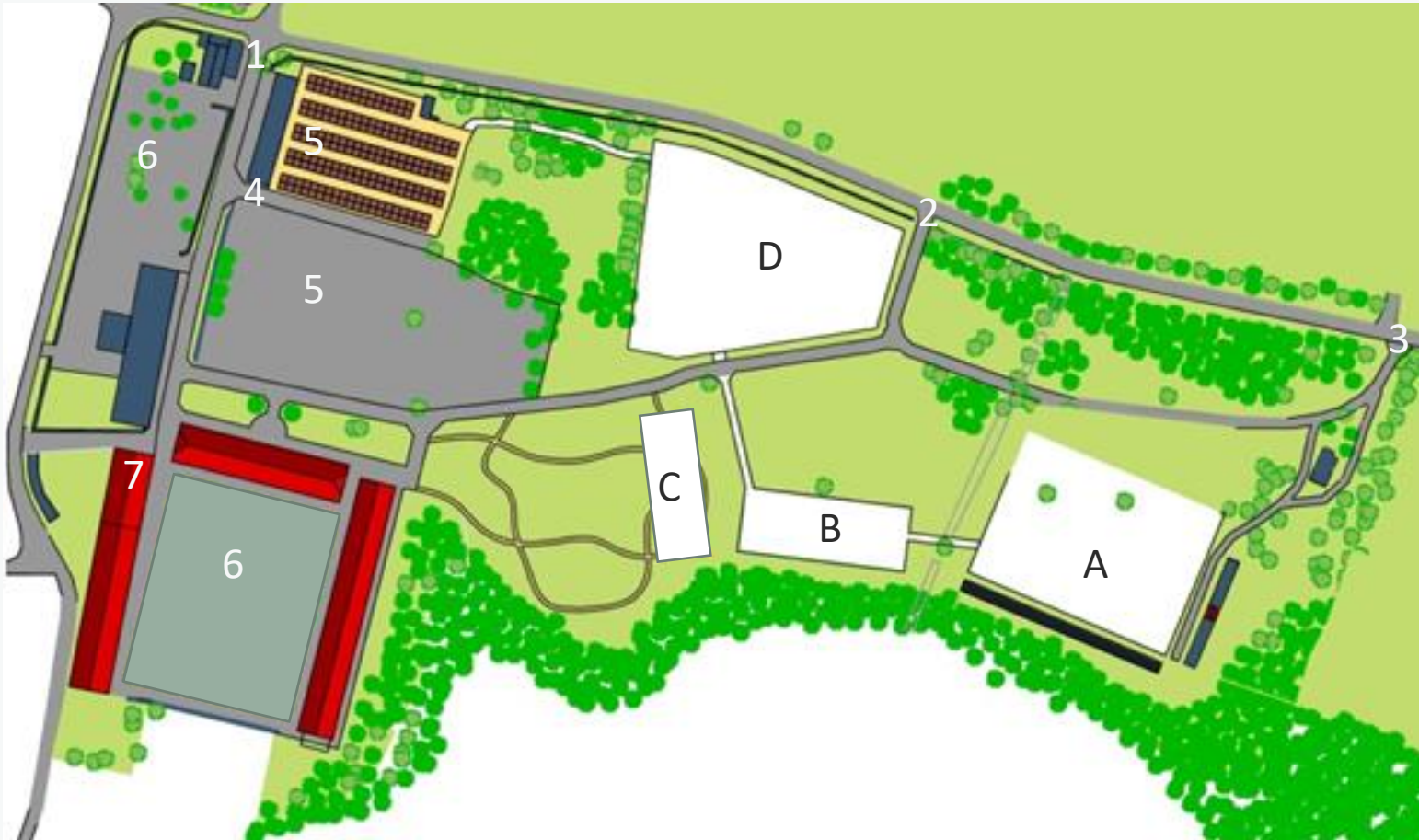
- All foreign participants **have to presents a negative Covid-19 test result** (made later than 48 hours before crossing the border)
- Type of test: Official PCR or antigen test with certificate in English

**OR**

## **Certificat of the Vaccination**

This applies to all people with a valid vaccination certificate, with a vaccine that has been accepted in the European Union /minimum 14 days after complete vaccination/.

# + MAP OF THE SHOWGROUND



1. Gate I
2. Gate II
3. Gate III
4. Stable gate
5. Stable
6. Car park
7. Isolation space

# **+ Entry authorisation**

## **Gate I**

- ❖ **Competitors**
- ❖ **Supporting personnel**
- ❖ **Person responsible for horse transport**
- ❖ **Officials**
- ❖ **Event staff**
- ❖ **Security staff**

## **Gate II**

- ❖ **Officials**
- ❖ **Sponsors**
- ❖ **Exhibitors**
- ❖ **Catering**
- ❖ **Event Staff**
- ❖ **Security staff**

## **Gate III**

- ❖ **Spectators**
- ❖ **Media representatives**
- ❖ **TV operators**
- ❖ **Event Staff**
- ❖ **Security staff**

# + Security on the showground

1. Each Participant must :

- a) wear a face mask covering mouth and nose unless there's a 1,5m distance from other Participants in the same space; this rule excludes an Athlete sitting on the horse;
- b) systematically sterilise hands at the stations located in toilets area, show office, competition zone, stables.

2. The Organiser will assign a Steward cooperating with the Organiser, who will coordinate and supervise the security system, especially the logistics of Participants, access to sanitizers, covering of mouth and nose by Participants.

3. All the rooms used during the event will be disinfected after each day of the event.

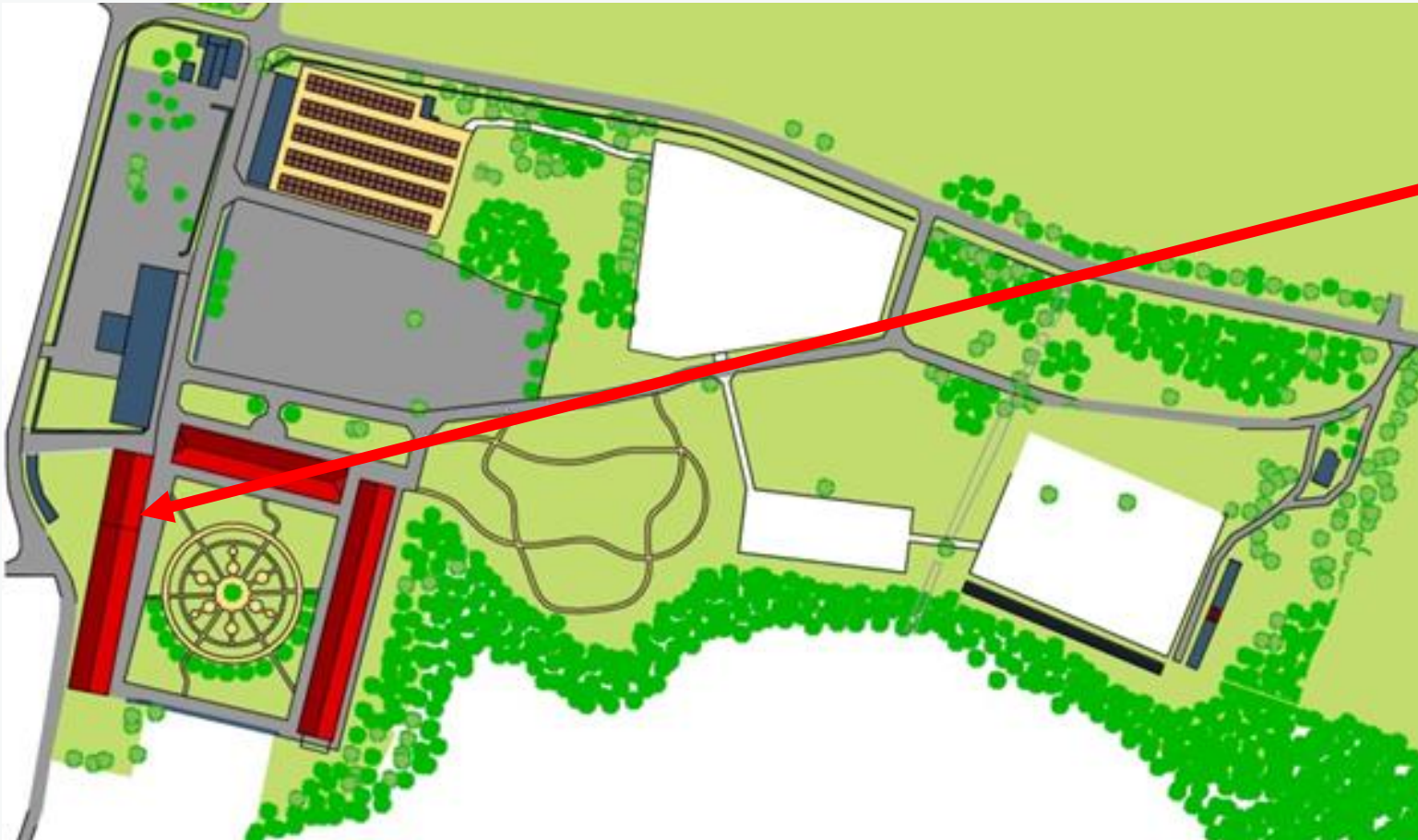
# + Security on the showground

The most common symptoms of Covid-19 are fever, dry cough and tiredness. Other symptoms that are less common and may affect some patients include: aches and pains, nasal congestion, headache, conjunctivitis, sore throat, diarrhoea, loss of taste or smell or a rash on skin or discoloration of fingers or toes. These symptoms are usually mild and begin gradually (Source: WHO website: <https://www.who.int/emergencies/diseases/novel-coronavirus-2019/question-and-answers-hub/q-a-detail/q-a-coronaviruses>) and the Participants with symptoms must immediately:

1. Go to the isolation space assigned by the Organiser.
2. Call the Organizer: 0048 601 769 772.

The Organiser will contact the Regional Sanitary and Epidemiological Station, competent for the showground of the event, or the 24-hour NFZ hotline 800-190-590.

# + Security on the showground



Isolation space for individuals  
with symptoms of Covid-19



# + Limitations and guidelines for specific groups of Participants

## Athletes

- Athletes can access Car Park zone, Stables, Show Office and Competition zone where they need to keep 1,5m of social distance.
- Minor Athletes can be accompanied by their representative.
- Athletes are not allowed in the Ground Jury box. All the issues are solved remotely. All official protests are managed in the Show Office as per PZJ and FEI rules.
- Cross Country and Show jumping test walking takes place keeping the 1,5m social distance rule.



# + Limitations and guidelines for specific groups of Participants

## TRAINERS

- Trainers can access the Car Park zone, Stables, Show Office and Competition zone, where they need to keep 1,5m of social distance.
- Because of limitations of direct contact, before dressage, jumping and cross country, test trainers give their instructions from the outside of the warm up area and keep the 1,5m social distance.
- Before the jumping test, the trainer is allowed to enter the warm up arena only 15 minutes before the rider's start.





# + Limitations and guidelines for specific groups of Participants

## GROOMS AND SUPPORTING TEAM

- Grooms can access the Car Park zone, Stables and Competition zone outside the warm up arena and competition area where they need to keep 1,5m of social distance.
- In case a rider is not accompanied by a trainer, the groom is allowed to enter the warm up area only 15 minutes before the rider's start.
- The Supporting Team can access the Car Park zone, Stables and Competition zones where they need to keep 1,5m of social distance.



# + Limitations and guidelines for specific groups of Participants

## OFFICIALS

- Officials (i.e. judges, scribes, Ground Jury assistants), while being indoors (i.e. judge's hut in dressage, GJ box in jumping test, control centre in cross country test), must wear face mask covering mouth and nose.
- Only Officials and essential staff responsible for running the competition are allowed in GJ box area.
- Officials will be given disposable gloves.
- Officials will have access to separate toilet.



# + Limitations and guidelines for specific groups of Participants

## CAR PARK ZONE

- Only Participants of the Event have access to Car Park Zone.
- A distance of 1,5m between vehicles has to be kept.
- All Participants in the Car Park Zone have to keep 1,5 metre distance
- Gatherings of more than 15 people are strictly forbidden in the Car Park Zone.

# + Limitations in the Show Office

- The number of people allowed in the Show Office is determined on the square meter space- the coefficient should be 15m<sup>2</sup> per 1 person, under the condition that there's one person being served at the post.
- Access to the Show Office is limited to Staff, Officials, Athletes and Supporting Team.



# + Limitations for media

1. Press Office will work only remotely (online).
2. The number of Press Office Staff will be limited.
  - The Organiser is going to issue a limited number of PRESS and PHOTO accreditations - two per editorial office /except Official photographers of the Organiser and the FEI/
  - Only active journalists, photographers or television crews working for registered media and official internet services can apply for accreditation. No accreditation will be given to bloggers or freelancers, unless they have a documented cooperation with beforementioned media.
3. Access to the showground is only given to:
  - Press Office Staff - press staff, social media staff, photo staff, video staff, Media Partners representatives
  - FEI accredited media - FEI TV, photographer
  - TV coverage staff
  - Online coverage staff
  - Accredited media
4. The Organiser will **not** provide a Press Office or Media Room for accredited media

**All Media representatives are to fill in the health check form. Also, they must inform the Organiser about the most common symptoms of Covid 19.**

**The most common symptoms of Covid-19 are fever, dry cough, and tiredness. Other symptoms that are less common and may affect some patients include aches and pains, nasal congestion, headache, conjunctivitis, sore throat, diarrhea, loss of taste or smell or a rash on skin or discoloration of fingers or toes. These symptoms are usually mild and begin gradually. (Source: WHO website: <https://www.who.int/emergencies/diseases/novel-coronavirus-2019/question-and-answers-hub/q-a-detail/coronavirus-disease-covid-19>).**

# + Limitations for sponsors

The number of sponsor representatives who will have access to the showground and to the specific zones will be limited.

- The Organiser allows the entry of a group of max. of 10 persons under the condition of keeping 1,5m social distance rule or using masks covering the nose and mouth
- The Organiser will open a hospitality zone for Sponsors with a limited number of people
- Sponsor representatives are only allowed to access the Competition zone

**All Sponsor representatives are to fill in the health check form. Also, they must inform the Organiser about the most common symptoms of Covid 19.**

**The most common symptoms of Covid-19 are fever, dry cough, and tiredness. Other symptoms that are less common and may affect some patients include aches and pains, nasal congestion, headache, conjunctivitis, sore throat, diarrhoea, loss of taste or smell or a rash on skin or discoloration of fingers or toes. These symptoms are usually mild and begin gradually. (Source: WHO website: <https://www.who.int/emergencies/diseases/novel-coronavirus-2019/question-and-answers-hub/q-a-detail/coronavirus-disease-covid-19>).**

# + Limitations for spectators

The number of spectators who will have access to the showground will be limited.

- The Organiser allows entering of spectators under the condition of keeping 1,5m social distance rule or using of masks or face shield, covering the nose and mouth.
- Only half of the seats at the grandstands can be occupied.

**All spectators are to fill in the health check form. Also, they must inform the Organiser about the most common symptoms of Covid 19.**

**The most common symptoms of Covid-19 are fever, dry cough, and tiredness. Other symptoms that are less common and may affect some patients include aches and pains, nasal congestion, headache, conjunctivitis, sore throat, diarrhoea, loss of taste or smell or a rash on skin or discoloration of fingers or toes. These symptoms are usually mild and begin gradually. (Source: WHO website: <https://www.who.int/emergencies/diseases/novel-coronavirus-2019/question-and-answers-hub/q-a-detail/coronavirus-disease-covid-19>).**



# + Limitations for trade stands

1. The number of trade stands at the event is limited.
2. All the stands at the event must follow the Guidelines of Polish government on providing safety for employees and customers during the pandemic.
  - All staff serving customers must wear gloves and masks
  - All individuals queuing should keep min. 1,5m distance
  - At the entrance and at the till point there should be hand sanitizer available

**All the staff of trade stands is to fill in the health check form. Also, they must inform the Organiser about the most common symptoms of Covid 19. The most common symptoms of Covid-19 are fever, dry cough, and tiredness. Other symptoms that are less common and may affect some patients include aches and pains, nasal congestion, headache, conjunctivitis, sore throat, diarrhoea, loss of taste or smell or a rash on skin or discoloration of fingers or toes. These symptoms are usually mild and begin gradually. (Source: WHO website: <https://www.who.int/emergencies/diseases/novel-coronavirus-2019/question-and-answers-hub/q-a-detail/coronavirus-disease-covid-19>).**





# + Limitations for hospitality/ catering

All the stands at the event must follow the Guidelines of Polish government on providing safety for employees and customers during a pandemic.

- All cooks and staff serving customers must wear gloves and masks
- All individuals queuing should keep min. 1,5m distance
- At the order collecting points and till points there should be hand sanitizer available
- Tables should have a min. 1,5m distance.
- All the tables should be disinfected after each use.

**All the hospitality/catering staff is to fill in the health check form. Also, they must inform the Organiser about the most common symptoms of Covid 19. The most common symptoms of Covid-19 are fever, dry cough, and tiredness. Other symptoms that are less common and may affect some patients include aches and pains, nasal congestion, headache, conjunctivitis, sore throat, diarrhoea, loss of taste or smell or a rash on skin or discoloration of fingers or toes. These symptoms are usually mild and begin gradually. (Source: WHO website: <https://www.who.int/emergencies/diseases/novel-coronavirus-2019/question-and-answers-hub/q-a-detail/coronavirus-disease-covid-19>).**

# + Appendix

## FORM - HEALTH INTERVIEW



### HEALTH INTERVIEW

- 1) Were you diagnosed with SARS CoV-2 in the last 14 days?  
☐ Yes ☐ No
- 2) Did you have contact with the person diagnosed with SARS CoV-2 in the last 14 days?  
☐ Yes ☐ No
- 3) Is your child/pupil or anyone in your household in quarantine now?  
☐ Yes ☐ No
- 4) Do you or anyone in your household have the most common symptoms of Covid 19.  
The most common symptoms of Covid-19 are fever, dry cough, and tiredness. Other symptoms that are less common and may affect some patients include aches and pains, nasal congestion, headache, conjunctivitis, sore throat, diarrhoea, loss of taste or smell or a rash on skin or discoloration of fingers or toes. These symptoms are usually mild and begin gradually.  
☐ Yes ☐ No
- 5) Does anyone in your household had any symptoms mentioned above in the last 14 days?  
☐ Yes ☐ No

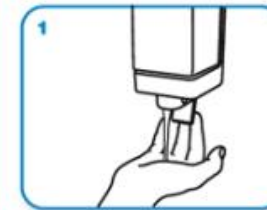
# + Appendix



## CLEAN HANDS PROTECT AGAINST INFECTION



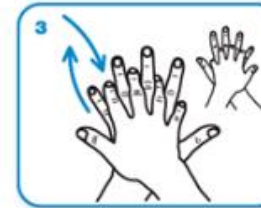
Wet hands with water



apply enough soap to cover all hand surfaces.



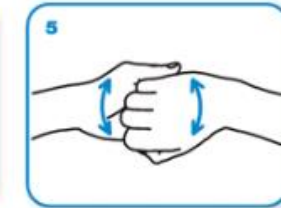
Rub hands palm to palm



right palm over left dorsum with interlaced fingers and vice versa



palm to palm with fingers interlaced



backs of fingers to opposing palms with fingers interlocked



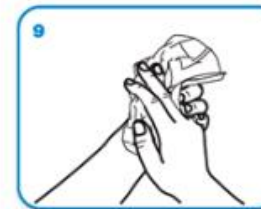
rotational rubbing of left thumb clasped in right palm and vice versa



rotational rubbing, backwards and forwards with clasped fingers of right hand in left palm and vice versa.



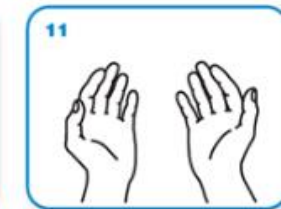
Rinse hands with water



dry thoroughly with a single use towel



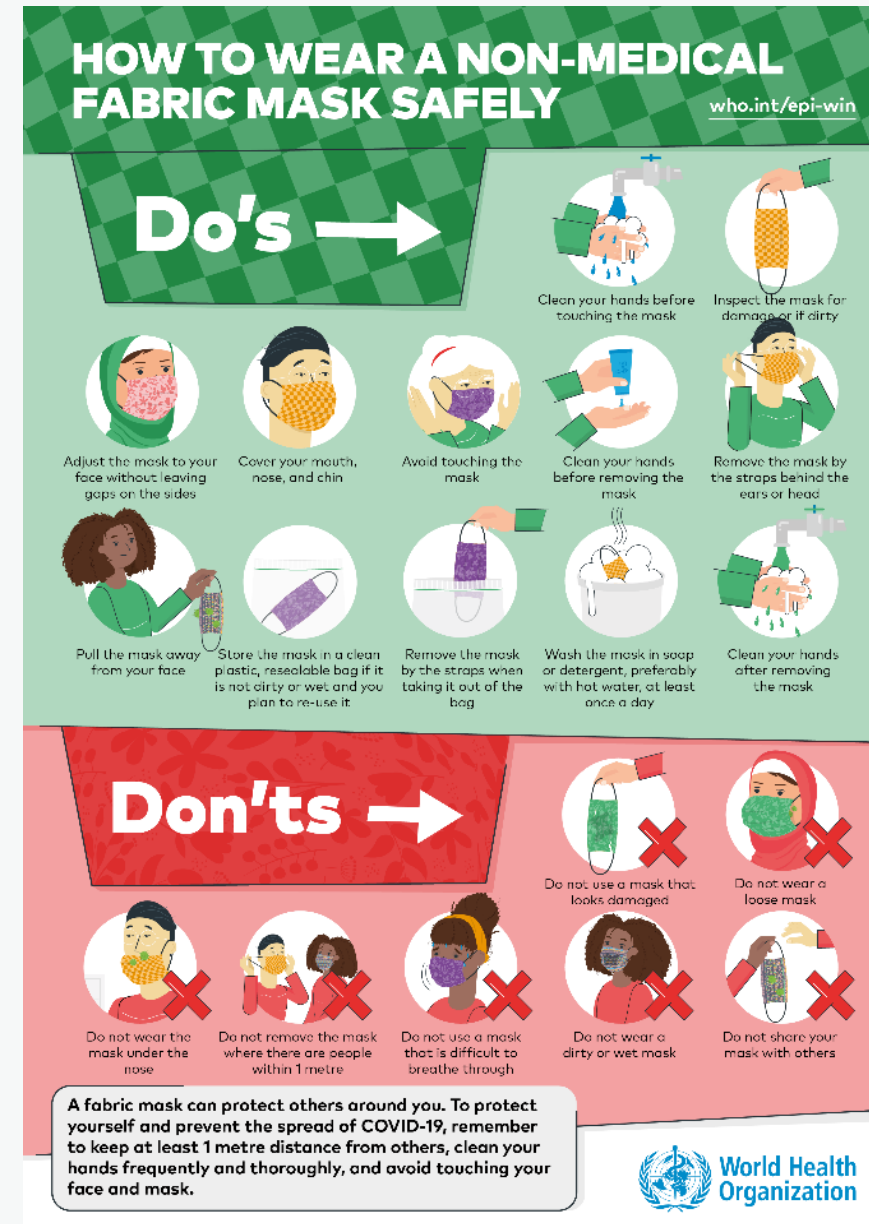
use towel to turn off faucet



...and your hands are safe.

# + Appendix

## HOW TO WEAR MASK SAFELY



## **I. DENOMINATION OF EVENT**

VENUE: STRZEGOM  
DATE: 11-15/08/2021  
NF: POL  
Indoor: ☐ Outdoor: ☒



☐ CDI1\* ☐ CDI2\* ☐ CDI3\* ☐ CDI4\* ☐ CDI5\* ☐ CDI-W  
☐ CDIO2\* ☐ CDIO3\* ☐ CDIO4\* ☐ CDIO5\* ☐ -NC  
☐ CDIJ ☐ CDIY ☐ CDIP ☐ CDIU25 ☐ CDICH  
☐ CDIOJ ☐ CDIOY ☐ CDIOP ☐ CDIOU25 ☐ CDIOCh  
☐ CDIAm ☐ CDIYH  
☒ Championship ☐ Games

## **II. GENERAL CONDITIONS**

- FEI Statutes, 24<sup>th</sup> edition, effective 19 November 2019.
- FEI General Regulations, 24<sup>th</sup> edition, 1<sup>st</sup> January 2020, updates effective 1<sup>st</sup> January 2021.
- FEI Veterinary Regulations, 14<sup>th</sup> edition, effective 1<sup>st</sup> January 2018, updates effective 1<sup>st</sup> January 2021.
- **FEI Dressage Rules (25<sup>th</sup> edition, effective 1<sup>st</sup> January 2014, including updates 1<sup>st</sup> January 2021) and if applicable the FEI Dressage World Cup™ Rules 2020/2021 and 2021/2022 and FEI Dressage Nations Cup™ Rules 2021.**
- Equine Anti-Doping and Controlled Medication Regulations (EADCMR), 3<sup>rd</sup> Edition, effective 1<sup>st</sup> January 2021.
- FEI Anti-Doping Rules for Human Athletes (ADRHA), based upon the 2021 WADA Code, effective 1<sup>st</sup> January 2021.
- The FEI Policy for Enhanced Competition Safety during the Covid-19 Pandemic, effective as of 1 July 2020 and until further notice.
- Given the current Covid-19 situation, please note that the FEI's approval of a Schedule should not be taken as an absolute guarantee that the Event will definitely go ahead. The decision whether the Event can take place must be made by the OC and NF in close consultation with the applicable domestic government and public health authorities. It is the responsibility of each Participant to check the status of the Event prior to planning his/her travel to the Event.
- All subsequent published revisions, the provisions of which will take precedence.

.....

**FEI APPROVED SCHEDULE  
STRZEGOM (POL) 11-15 August 2021**

---

Approved by the FEI, Lausanne, on 18/06/2021. Updated 22/06/2021.  
Updated 29/06/2021. Updated 09/07/2021 Covid-19. Updated 27/07/2021.  
Updated 05/08/2021.



Bettina De Rham  
FEI Director Dressage & Para Dressage

**TABLE OF CONTENTS**

<b>I.</b>	<b>DENOMINATION OF EVENT.....</b>	<b>1</b>
<b>II.</b>	<b>GENERAL CONDITIONS .....</b>	<b>12</b>
<b>III.</b>	<b>THE FEI CODE OF CONDUCT FOR THE WELFARE OF THE HORSE .....</b>	<b>16</b>
<b>IV.</b>	<b>GENERAL INFORMATION .....</b>	<b>17</b>
1.	ORGANISER .....	17
2.	ORGANISING COMMITTEE .....	17
3.	EVENT DIRECTOR .....	17
<b>V.</b>	<b>OFFICIALS .....</b>	<b>18</b>
<b>VI.</b>	<b>INVITATIONS.....</b>	<b>19</b>
<b>VII.</b>	<b>ENTRIES.....</b>	<b>19</b>
1.	ENTRY DATES AND FEES: .....	20
2.	NO-SHOWS/LATE WITHDRAWALS: .....	20
3.	ADDITIONAL FEES/CHARGES BY ORGANISING COMMITTEE: .....	21
4.	DEGREE OF DIFFICULTY – FLOORPLAN GRAND PRIX FREESTYLE .....	21
<b>VIII.</b>	<b>TIMETABLE.....</b>	<b>22</b>
<b>IX.</b>	<b>COMPETITIONS DETAIL.....</b>	<b>23</b>
<b>X.</b>	<b>FACILITIES OFFERED .....</b>	<b>25</b>
1.	ATHLETES .....	25
2.	GROOMS .....	25
<b>XI.</b>	<b>LOGISTICAL/ADMINISTRATIVE/TECHNICAL INFORMATION .</b>	<b>26</b>
1.	DRAW .....	26
2.	COMPETITION ARENA(S).....	26
3.	PRACTICE ARENA(S) .....	26
4.	STABLES .....	26
5.	PAPERLESS JUDGING .....	26
6.	SCORING PROVIDER / TIMING PROVIDER .....	26
7.	AVERAGE SCORE / OPEN SCORING .....	27
8.	OTHER TECHNOLOGY/SERVICE PROVIDER(S) .....	27
9.	PRIZE GIVING CEREMONY .....	27
10.	ADVERTISING ON ATHLETES AND HORSES .....	27
11.	TICKETING .....	27
12.	BETTING .....	27
13.	TRANSPORT REIMBURSEMENT HORSES / PONIES .....	27
14.	WELCOME .....	27

15.	LOCAL TRANSPORTATION - ARRANGEMENTS FROM HOTEL TO SHOWGROUNDS.....	27
16.	ENTRY RIGHT TO SHOWGROUNDS/ACCREDITED PERSONS .....	28
17.	SUSTAINABILITY .....	28
<b>XII.</b>	<b>VETERINARY MATTERS.....</b>	<b>29</b>
1.	CUSTOMS FORMALITIES .....	29
2.	HEALTH REQUIREMENTS .....	29
3.	NATIONAL REQUIREMENTS.....	29
4.	PONIES .....	29
5.	INJURY SURVEILLANCE .....	29
6.	TRANSPORT OF HORSES .....	29
7.	VENUE ARRIVAL INFORMATION & FITNESS TO COMPETE .....	30
8.	EQUINE ANTI-DOPING AND CONTROLLED MEDICATION PROGRAMME (EADCMP). FEI Regulations, Chapter VII .....	31
<b>XIII.</b>	<b>HUMAN ANTI-DOPING.....</b>	<b>32</b>
<b>XIV.</b>	<b>ADDITIONAL INFORMATION .....</b>	<b>32</b>
1.	THE FEI POLICY FOR ENHANCED COMPETITION SAFETY DURING THE COVID-19 PANDEMIC .....	32
2.	INSURANCES AND NATIONAL REQUIREMENTS .....	33
3.	PROTESTS/APPEALS .....	34
4.	DISPUTES .....	34
5.	MODIFICATION TO SCHEDULE .....	34
6.	ADDITIONAL INFORMATION FROM THE ORGANISER .....	35
<b>XV.</b>	<b>ANNEXES.....</b>	<b>36</b>
1.	FEI ENTRY SYSTEM .....	36
2.	RESULTS .....	37



### **III. THE FEI CODE OF CONDUCT FOR THE WELFARE OF THE HORSE**

The Fédération Equestre Internationale (FEI) expects all those involved in international equestrian sport to adhere to the FEI's Code of Conduct and to acknowledge and accept that at all times the welfare of the horse must be paramount and must never be subordinated to competitive or commercial influences.

1. At all stages during the preparation and training of competition horses, welfare must take precedence over all other demands. This includes good horse management, training methods, farriery and tack, and transportation.
2. Horses and athletes must be fit, competent and in good health before they are allowed to compete. This encompasses medication use, surgical procedures that threaten welfare or safety, pregnancy in mares and the misuse of aids.
3. Events must not prejudice horse welfare. This involves paying careful attention to the competition areas, ground surfaces, weather conditions, stabling, site safety and fitness of the horse for onward travel after the event.
4. Every effort must be made to ensure that horses receive proper attention after they have competed and that they are treated humanely when their competition careers are over. This covers proper veterinary care, competition injuries, euthanasia and retirement.
5. The FEI urges all involved with the sport to attain the highest levels of education in their areas of expertise.

A full copy of this Code can be obtained from the Fédération Equestre Internationale, Chemin de la Joliette 8, CH-1006 Lausanne, Switzerland. Telephone: +41 21 310 47 47. The Code is available in English. The Code is also available on the FEI's website: <http://inside.fei.org/>

## **IV. GENERAL INFORMATION**

### **1. ORGANISER**

Name: LKS Stragona Strzegom  
Address: Morawa 36, 58-150 Strzegom, POLAND  
Telephone: 0048 74 855 40 42  
Email: office@stragona.pl  
Website: www.strzegomponies.pl

#### Contact Details Show Ground:

Address: Morawa 36, 58-150 Strzegom  
Telephone: 0048 74 855 40 42  
GPS Coordinates: N50° 58' 14.187" , E16° 23' 46.634"  
Accessibility details (directions by road, nearest airport / train station):  
BY CAR: 14 km from Motorway A4 direction Strzegom  
BY plane: Airport Wroclaw - 50 km from Main Arena (approx 40min)  
PLEASE NOTE: ALL riders are reminded that in Poland is in force "viaTOLL" system  
– electronic toll collection system.  
More information on <http://www.viatoll.pl/en/home>

### **2. ORGANISING COMMITTEE**

Honorary President: Zbigniew Suchyta - the Mayor of Strzegom  
President of the event: Marcin Konarski  
Show Secretary: Agnieszka Tymczyszyn  
Press Officer: Agnieszka Chmieleńska

### **3. EVENT DIRECTOR**

Name: Marta Wójcik  
Address: Morawa 36, 58-150 Strzegom  
Telephone: 0048 74 855 40 42  
Mobile: 0048 885 544 202  
Email: office@stragona.pl

# FEI APPROVED SCHEDULE STRZEGOM (POL) 11-15 August 2021



## V. OFFICIALS

Please note that the schedule has been approved under the provision that all appointed Officials have successfully passed the on-line FEI Competency Evaluation Test.

Ref.	Panel	Function	FEI ID	Name	NF	Level	Contact Email
1	Ground Jury	Ground Jury President	10052562	ULRIKE NIVELLE	GER	5*	<a href="mailto:ulrike.nivelle@web.de">ulrike.nivelle@web.de</a>
		Ground Jury Member	10000001	MARIETTA ALMASY	FRA	5*	<a href="mailto:marietta.almasy@wanadoo.fr">marietta.almasy@wanadoo.fr</a>
		Ground Jury Member	10053656	EDUARD DE WOLFF VAN WESTERRODE	NED	5*	<a href="mailto:westerro@caret.net">westerro@caret.net</a>
		Ground Jury Member	10093970	PAULA NYSTEN	FIN	4*	<a href="mailto:paula.nysten@op.fi">paula.nysten@op.fi</a>
		Ground Jury Member	10147117	AGNIESZKA MAJEWSKA	POL	4*	<a href="mailto:agnes390@wp.pl">agnes390@wp.pl</a>
		Ground Jury Member – reserve	10081746	EVA-MARIA VINT-WARMINGTON	EST	4*	<a href="mailto:eva-maria@travelmoments.ca">eva-maria@travelmoments.ca</a>
2	Foreign Technical Delegate	Foreign Technical Delegate	10050246	MAJA STUKELJ	SLO		<a href="mailto:stukelj.maja1@gmail.com">stukelj.maja1@gmail.com</a>
3	Chief Steward	Chief Steward	10052898	KATARZYNA WIDALSKA	POL	3	<a href="mailto:k.widalska@o2.pl">k.widalska@o2.pl</a>
		Chief Steward	10052984	ZBIGNIEW SEIBT	POL	3	<a href="mailto:zas.s@interia.pl">zas.s@interia.pl</a>
4	Assistant Stewards	Assistant Steward	10102853	MARLENA GRUCA-RUCIŃSKA	POL	1	<a href="mailto:stajnia-equus.gruca@wp.pl">stajnia-equus.gruca@wp.pl</a>
		Assistant Steward	10025161	SIMONETTA BELLI DELL'ISCA	ITA	2	<a href="mailto:simonettabellidisca@libero.it">simonettabellidisca@libero.it</a>
		Assistant Steward	10059486	SONJA THEIS	GER	1	<a href="mailto:sonja.theis.loehnberg@web.de">sonja.theis.loehnberg@web.de</a>
		Assistant Steward	10102857	BARBARA SZYMCZAK	POL	2	<a href="mailto:szymczakwp@wp.pl">szymczakwp@wp.pl</a>
		Assistant Steward	10052984	ZBIGNIEW SEIBT	POL	3	<a href="mailto:zas.s@interia.pl">zas.s@interia.pl</a>
5	FEI Veterinary Delegate	Veterinary Delegate					
		Additional Veterinary Delegate					
	FEI Veterinary Commission	Veterinary Commission President	10049846	JANUSZ OKONSKI	POL	3	<a href="mailto:jokon1@O2.pl">jokon1@O2.pl</a>
		Foreign Veterinary Delegate	10054447	KATARINA JOHANSSON	SWE	2	<a href="mailto:v9katjoh@hotmail.com">v9katjoh@hotmail.com</a>
		Veterinary Commission Member	10086688	LUKASZ GATKIEWICZ	POL	2	<a href="mailto:lukasz.gatkiewicz@evan-vet.pl">lukasz.gatkiewicz@evan-vet.pl</a>
6	Veterinary Services Manager / Treating Veterinarian	Veterinary Services Manager	10007251	JULIA KORNASZEWSKA	POL		<a href="mailto:juliakornaszewskaet@gmail.com">juliakornaszewskaet@gmail.com</a>
		Permitted Treating Veterinarian					
7	Doctor/Medical Service	Doctor/Medical Service	10007531	PIOTR WOZNAK	POL		<a href="mailto:office@stragona.pl">office@stragona.pl</a> +48 603 317 213
8	Farrier	Farrier	10235282	MIECZYSLAW KRYSZCZYNSKI	POL		<a href="mailto:office@stragona.pl">office@stragona.pl</a> +48 605 312 762
9	NF Delegate	NF Delegate (if applicable)					

## **VI. INVITATIONS**

Number of NFs invited:	All European Nfs
State which NFs are invited:	All European Nfs
Reserve NFs:	./.
Total Number of athletes:	./.
Number of home athletes:	4
Number of athletes per NF:	4
Number of horses per athlete:	1
Athletes are invited by the Organiser through their NF.	
One (1) groom per athlete.	

Each NF may enter one (1) team of three (3) or four (4) Athletes and Ponies.

Reserve combinations are not allowed.

An NF which cannot send a team may enter one (1) or two (2) individual Athletes with one (1) pony each.

Championships are open to Athletes from the beginning of the year in which they reach the age of 12 years until they end of the year they reach the age of 16 years. Ponies must be at least 6 years old.

The Chefs d'Equipe, the Athletes, grooms and all Teams Members must comply with the instructions of the Technical Delegate, Officials and C.O. people.

The Chefs d'Equipe are responsible for the behaviour of their teams and/or individuals throughout the Event. They and their NF are responsible for any damages that occur during the Event in Showground -Stables and Hotels.

## **VII. ENTRIES**

- You must use the FEI Entry System for all categories of this Event:  
<https://entry.fei.org>
- You will find additional documentation on:  
<https://inside.fei.org/fei/your-role/it-services/it-platforms/fei-entry-system>
- All Athletes and Horses participating in any International Competition must be registered with the FEI.
- Athletes and/or Horses present at the Event without having been entered through the FEI's Online Entry System will automatically be disqualified unless compelling circumstances warrant otherwise.

**1. ENTRY DATES AND FEES:**

**Deadlines for entries**

Nominated Entries: 12/07/2021

Definite Entries: 06/08/2021

Last date for substitutions: 10/08/2021

Entries have to be in accordance with art 423 of the Dressage Rules and art 116 of the General Regulations.

**Entry fee per horse:** 540 EUR / VAT Included

Stabling fee per horse (if any): N/A

Starting fee per horse (if any): N/A

**VAT:** 8%

**Total fee per horse:** **605 EUR / VAT included**  
**(540 + 40 manure disposal + 25 EADCMP)**

**Compulsory fees per athlete:**

- Fee for lorry parking if applicable:  
**100 EUR** per lorry/caravan/horse trailer
- Fee for electric hook-up for lorry:  
without fee – only for lorry & caravan on paid parking

**All aforementioned amounts are including VAT**

**Total maximum fee per Athlete:** **150 EUR**

Details entry procedure fee / Payment:

OC details: LKS STRAGONA, Morawa36, 58-150 Strzegom

Payment in EUR:

PL 42 1090 2343 0000 0001 0499 6685

Swift codes: WBK PPLPP

all Entry Fee have to be payed with Nominated Entries

**2.NO-SHOWS/LATE WITHDRAWALS:**

**NB:** In the case of withdrawals after the date of definite entries or no-shows the athlete or the respective NF will be held liable to reimburse the Organiser for the actual financial loss incurred by the Organiser (i.e. stabling and hotel expenses) as a result of the late withdrawal or no-show.

Amount charged:

Withdrawal:

Before 12.07.2021 - 100% refund

After 22.07.2021 - 50% refund

After 22.07.2021 - no refund

In case of withdrawal or no-shows after the date of 22.07.2021: the athlete or the respective NF the athlete will be held liable and have to pay full entry fee. Presentation of a med. or vet. certificate will not exempt from having to charge fees.

### **3.ADDITIONAL FEES/CHARGES BY ORGANISING COMMITTEE:**

All other fees must be listed hereunder with the details of the amounts to be charged and approved by the FEI. Only fees approved by the FEI and listed in the approved Schedule can be charged by the Organiser.

EADCMP Fee:

Included in compulsory entry fee ☒

Not included in compulsory entry fee ☐

Lower Level Events (CIMS) CHF 18 per horse per event  
(For definition of CIMS see Appendix E of the FEI General Regulations)  
Higher Level Events CHF 25 per horse per event  
(All other events not defined as CIM)

Electricity (upon request): 100 EUR per box incl. VAT (8%)  
only be request before entry closing date

Manure disposal: 40 EUR (included in the entry fee)

Hay: daily price

Straw: daily price /first bedding free of charge

Shavings: daily price/first bedding not included in entry fee

Health/customs-related documents for Horses, if applicable (only if requested – Athletes may opt out of this fee only if their horses do not need such documents) – 25 EUR per horse

Tack box: 150 EUR can only be provided if will booked before 12/07/2021

### **All aforementioned amounts are including VAT**

VAT Number of the Organiser: PL 884-22-76-847

### **4. DEGREE OF DIFFICULTY – FLOORPLAN GRAND PRIX FREESTYLE**

☐ DoD will be used. ☐ DoD will not be used. ☒ Not Applicable.

Athletes are required to login using their own credentials on to <http://dressagefreestyle.fei.org> to create or assign their Grand Prix Freestyle floorplan at the latest 2 hours prior to:

☐ the horse inspection.

☐ the draw of the Grand Prix.

## VIII. TIMETABLE

**Competitions must not start before 08:00 and must not finish after 23:00 unless prior approval is granted by the FEI.**

**The current edition of Dressage Tests at the date of the show will be used and all tests must be ridden from memory.**  
<https://inside.fei.org/fei/your-role/organisers/dressage/tests>

	Day	Date	Time
• <u>First arrival to the stable*</u>	Monday	09/08/2021	8.00-15.00
• <u>Opening of stables</u>	Monday	09/08/2021	8.00
• <u>Chef's d'Equipe Meeting (if applicable)</u>	Monday	09/08/2021	18.30
• <u>Pony Measurement</u>	Tuesday	10/08/2021	8:00-10.00
• <u>Horse Inspection</u>	Tuesday	10/08/2021	10.00-11.30
• <u>Horse Inspection for the Pony Freestyle test</u>	Saturday	14/08/2021	19.00
• <u>Official Training</u>	Tuesday	10/08/2021	12.00-16.00
• <u>Opening Ceremony &amp; The Nations Evening</u>	Tuesday	10/08/2021	19.00
• <u>Declaration of Starters</u>	Not later than one (1) hour after the horse inspection.		
• <u>Draw:</u>			
Pony Riders Team test	Tuesday	10/08/2021	16.30
Pony Riders Individual test	Thursday	12/08/2021	16.30
Pony Riders Freestyle test	Saturday	14/08/2021	14.00

\* REGARDING FEI RULES FOR EHV1 THERE IS NOT POSSIBILITY TO ARRIVE AT OTHER TIME

Competitions CH-EU-P-D:	Day	Date	Time	Prize Money
01 Pony Team - Part 1	Wednesday	11/08/2021	10:00-16:00	
01 Pony Team - Part 2	Thursday	12/08/2021	10:00-16:00	
02 Pony Individual - Part 1	Friday	13/08/2021	10:00-16:30	
02 Pony Individual - Part 2	Saturday	14/08/2021	09:00-13:30	
03 Pony Freestyle Freestyle	Sunday	15/08/2021	09:00-12:00	
<b>Prizes in Kind</b>	FEI medals, trophies and other prizes in kind			

### GENERAL CLASSIFICATION AT THE END OF THE COMPETITIONS:

Leading athlete award -	N/A
Best foreign athlete -	N/A
Best home athlete -	N/A
Team awards -	N/A

## **IX. COMPETITIONS DETAIL**

**FIRST DAY: Wednesday**

**DATE: 11/08/2021**

### **COMPETITION No 1 - Pony Riders Team Competition Part 1**

Test: Pony Team  
Number of horses per athlete: 1  
Open to: compulsory for all athletes entered  
Draw/Art: 425.10

\* \* \* \* \*

**SECOND DAY: Thursday**

**DATE: 12/08/2021**

### **COMPETITION No 1 - Pony Riders Team - Part 2**

Test: Pony Team  
Number of horses per athlete: 1  
Open to: compulsory for all athletes entered  
Draw/Art: 425.10  
Classification: According to Art 434, the winning team (three best Athletes) is the one with the next highest total, and so on.  
Ties: If two or more teams gain the same number of percentages for the first or second place, the winning team is the one whose third classified athlete has the best result. In case of equality of percentages for third place (bronze medal). For further places the teams are given the same placing.

### **FEI Dressage European Pony Team Championship**

FEI Gold Medals to the athletes of the Winning Team  
FEI Silver Medals to the athletes of the 2nd placed Team  
FEI Bronze Medals to the athletes of the 3rd placed Team

\* \* \* \* \*



**THIRD DAY: Friday**

**DATE: 13/08/2021**

**COMPETITION No 2 - Pony Riders Individual - Part 1**

Test: Pony Team  
Number of horses per athlete: 1  
Open to: compulsory for all athletes who completed the Pony Team competition.  
Draw/Art: 425.10

**FOURTH DAY: Saturday**

**DATE: 14/08/2021**

**COMPETITION No 2 - Pony Riders Individual - Part 2**

Test: Pony Team  
Number of horses per athlete: 1  
Open to: compulsory for all athletes who completed the Pony Team competition.  
Draw/Art: 425.10

**FEI Dressage European Pony Individual Championship**

FEI Gold Medals to the Winning Athlete  
FEI Silver Medals to the 2nd placed Athlete  
FEI Bronze Medals to the 3rd placed Athlete

**FOURTH DAY: Sunday**

**DATE: 15/08/2021**

**COMPETITION No 3 - Pony Riders Freestyle**

Test: Pony Freestyle  
Number of horses per athlete: 1  
Open to: compulsory for the best 18 athletes from the Pony Individual Test (Comp. No. 02) including those who tie for the 18<sup>th</sup> place. Only the 3 best athletes per nation may participate  
Draw/Art: 425.5

**FEI Dressage European Pony Freestyle Championship**

FEI Gold Medals to the Winning Athlete  
FEI Silver Medals to the 2nd placed Athlete  
FEI Bronze Medals to the 3rd placed Athlete

## **X. FACILITIES OFFERED**

### **1.ATHLETES**

#### **Accommodation.**

Hotel: List of hotels available at [www.booking.com](http://www.booking.com)

At the expense of: The Organiser ☐ or the Athlete ☒

#### **Meals.**

At the expense of: The Organiser ☒ or the Athlete ☐

The OC will provide Lunch for all Athletes and Chefs d'Equipes, in the Restaurant on Main Arena from 11/08/2021 to 15/08/2021 at OC expense.

### **2.GROOMS**

#### **Accommodation.**

Requests for accommodation must be sent with entries.

At the expense of: The Organiser ☐ or the Athlete ☒

#### **Meals.**

At the expense of: The Organiser ☐ or the Athlete ☒

**N.B. Organiser's must provide proper sanitary conditions. The showering facilities should be sufficient for both male and female grooms with hot and cold water. Shower facilities as well as restrooms should at all times be in a state of cleanliness.**

## **XI. LOGISTICAL/ADMINISTRATIVE/TECHNICAL INFORMATION**

### **1.DRAW**

Location of the draw: Arena A.

### **2.COMPETITION ARENA(S)**

Total dimensions: 90m x 60m (Competition arena - dimensions: 20 x 60 m)

Type of Footing: All Weather servise - Reitboden Vornbrock

### **3.PRACTICE ARENA(S)**

Total dimensions: 65m x 25m (Competition arena - dimensions: 20 x 60 m)

Type of Footing: All Weather servise - Reitboden Vornbrock

### **4.STABLES**

Size of boxes: 3 m x 3 m (minimum 3m x 3m + 20 % 3m x 4m)

### **5.PAPERLESS JUDGING**

It is compulsory to have a certified software/solution in order to offer Paperless Judging at FEI Dressage Events.

Will you use a FEI Certified Paperless Judging Software/Solution to manage judging at your Event? (The list of certified Service Providers is available here: <https://inside.fei.org/fei/your-role/it-services/it-providers/list>)

No ☒

### **6.SCORING PROVIDER / TIMING PROVIDER**

Will you use a FEI Certified Service Provider to manage the scoring and timing at your Event? (The list of certified Service Providers is available here: <https://inside.fei.org/fei/your-role/it-services/it-providers/list>)

No ☒

Name of Company: HTE - JACEK RYCZYWOLSKI

Contact person at Event:

Name: Jacek Ryczynowski

FEI ID number: 10109685

Contact email: hte.event@gmail.com

The FEI may require to be provided with real time results data feed of your Events according to FEI requirements; in this case you and your provider will be informed accordingly.

**7.AVERAGE SCORE / OPEN SCORING**

Average Score and Open Scoring: Yes ☒ No ☐

**8.OTHER TECHNOLOGY/SERVICE PROVIDER(S)**

Will you use other technology/service provider(s) at your Event?

No ☒

**9.PRIZE GIVING CEREMONY**

The number of athletes required to present themselves for the prize giving ceremony of each competition is 3 Teams & 12 Individuals

All prize giving ceremonies must strictly follow the **Covid-19 guidelines for Prize giving protocols and media activities.**

**10. ADVERTISING ON ATHLETES AND HORSES**

The athletes are authorised to carry the logo of their personal sponsor. The Chief Steward will check that the advertising and publicity on athletes and horses complies with Article 135 of the General Regulations.

**11. TICKETING**

Are you selling ticket for spectator to attend your event: Yes ☐ No ☒

**12. BETTING**

Betting will be authorised by the Organiser. Yes ☐ No ☒

**13. TRANSPORT REIMBURSEMENT HORSES / PONIES**

Transport expenses to be paid by:

The Organiser ☐ at \_\_\_\_\_ per km or the Athlete ☒

**14. WELCOME**

The time and date of arrival of athletes, horses and their means of transport must be given to the Organiser in order to facilitate them on arrival.

**15. LOCAL TRANSPORTATION - ARRANGEMENTS FROM HOTEL TO  
SHOWGROUNDS**

Walking distance ☒

Organiser Shuttle Service ☐

Public Transport ☐ to be paid by the Organiser ☐ or the Athlete ☒

If paid by Athlete approximate cost per round trip:

Taxi: ☐ to be paid by the Organiser ☐ or the Athlete ☒.

If paid by Athlete approximate cost per round trip:

Other:

**16. ENTRY RIGHT TO SHOWGROUNDS/ACCREDITED PERSONS**

Entry right to the stable area acc. to FEI Veterinary Regulations Art. 1008-1009.

NUMBER ACCREDITED PERSONS:

Athlete: 1

Partner: 1

Groom: 1

Horse Owner: two (2) accreditations per horse acc. to FEI Passport

Other: Chef's d'Equipe - 1; Team Vet - 1

**17. SUSTAINABILITY**

Please consider the environment when organising an FEI Event. Please find useful information on FEI Sustainability here:

<http://inside.fei.org/fei/your-role/organisers/handbook>

## **XII. VETERINARY MATTERS**

### **1.CUSTOMS FORMALITIES**

No custom formalities for EU based horses. If you come from outside of EU please contact your local authority.

### **2.HEALTH REQUIREMENTS**

#### **GENERAL**

In accordance with the FEI Code of Conduct for the Welfare of the Horse it is imperative that all Horses at FEI Events are physically fit and free from infectious disease before being allowed to compete.

#### **ENTRY OF HORSES**

Required health tests and vaccinations: N/A  
Quarantine period: N/A  
Specimen Import Licence applied: N/A

### **3.NATIONAL REQUIREMENTS**

N/A

### **4.PONIES**

FEI Veterinary Regulations, Chapter IX and Annex IX: For all Pony Events, Ponies must be available for Pony Measurement if requested by the FEI.

### **5.INJURY SURVEILLANCE**

FEI Veterinary Regulations, Chapter VIII: Horses participating in FEI Events are subject to injury surveillance protocols; and in the event of fatality, a post mortem examination.

### **6.TRANSPORT OF HORSES**

Horses must be fit to travel and be transported in suitable vehicles. Any government requirements for disease testing and control must be requested well in advance, to ensure that the horse is in compliance by the time of arrival at the border of the country where the Event is taking place. Athletes, or their representatives, have the responsibility to comply with national legislation in both their country of origin and the host nation of the Event. Where necessary athletes must contact local government authorities or veterinary advisors for information regarding animal health requirements and transport legislation. Within the European Union (EU), this includes EU Council Regulation (EC) No 1/2005 concerning the protection of animals during transport within the Member States of the EU.

## **7. VENUE ARRIVAL INFORMATION & FITNESS TO COMPETE**

### **7.1 PASSPORTS. FEI General Regulations Article 137**

**For all issues relating to FEI Horse Passports/FEI Recognition Cards please contact your National Federation.**

All Horses competing at FEI Events must be registered with the FEI.

FEI Passports or FEI Recognition Cards (for those Horses with a national passport approved by the FEI) are compulsory for FEI Events.

NB: Horses entered in CIMs in their country of residence are not required to have an FEI Passport or FEI Recognition Card but must be properly registered with the FEI and identifiable (GRs 137.2).

Athletes who do not present a Horse's Passport and/or Recognition Card, or one that is not correctly validated or fail to meet other passport requirements will be **subject to Sanctions in accordance with Annex VI of the FEI Veterinary Regulations** and may not be allowed to compete.

**NB** for Horses permanently resident in a Member State of the European Union: all Horses must have a national EU passport in compliance with EU Regulations to which a FEI Recognition card is applied. The exception to this being Horses in possession of an FEI passport which has been continually revalidated without interruption.

### **7.2 VACCINATIONS - EQUINE INFLUENZA. FEI Veterinary Regulations Article 1003**

Horses competing at FEI Events must comply with the requirements for Equine Influenza vaccination in accordance with the Veterinary Regulations and as summarised below.

<b>VACCINATION</b>	<b>PROTOCOL</b>	<b>ELIGIBILITY TO ENTER VENUE</b>
<b>Primary Course</b>	1 <sup>st</sup> Vaccination: day 0 2 <sup>nd</sup> Vaccination: day 21-92	May compete 7 days after the 2 <sup>nd</sup> Vaccination
<b>First Booster</b>	Within 7 months of the 2 <sup>nd</sup> vaccination of the Primary Course	May compete for 6 months +21 days after the 2 <sup>nd</sup> vaccination of the Primary Course Must not compete in the 7 days after receiving a vaccination
<b>Boosters</b>	<b>MINIMUM:</b> within one year of previous booster vaccination <b>IF COMPETING:</b> must be in the 6 months +21 days of the booster previous vaccination	Must have been vaccinated within 6 months +21 days before arriving at the Event Must not compete in the 7 days after receiving a vaccination

All FEI registered Horses intending to compete at FEI Events (including CIMs) must be vaccinated against Equine Influenza in accordance with these VRs. The exception being if the applicable domestic legislation prevents the use of Equine Influenza vaccines within the relevant territory.

**7.3 EXAMINATION ON ARRIVAL. FEI Veterinary Regulations Article 1031**

On arrival at an Event venue, all Horses must undergo an examination by a veterinarian to confirm their identification from their passport and micro-chip ID (where present), their vaccination status and general health. To protect all horses attending events, any Horse with a questionable health status concerning vaccination, disease or other concerns, must be stabled within the isolation facilities provided by the Organising Committee pending a decision on entering the venue.

**7.4 HORSE INSPECTIONS. FEI Veterinary Regulations Articles 1034-1042**

All Horses will be assessed for their fitness to compete during the Horse Inspection. Any Horse demonstrating questionable fitness may be referred to the Holding Box for further veterinary examination. Horses not deemed fit to compete by the Inspection Panel will not be permitted to compete.

**7.5 LIMB SENSITIVITY EXAMINATION. FEI Veterinary Regulations Articles 1048-1053**

All Horses are subject to examination under the protocol for abnormal limb sensitivity throughout the period of an Event. For Jumping that includes, but is not limited to, between rounds and before the Jump Off. For Endurance that includes, but is not limited to, pre-ride, during the ride and after the ride. Horses may be examined once or on multiple occasions during the Period of an Event. Horses may be selected for examination under the protocol randomly or they may be targeted. All Horses selected to be tested must submit promptly to the examination or are subject to immediate disqualification. There is no obligation to examine any specific number of Horses at an Event.

**8. EQUINE ANTI-DOPING AND CONTROLLED MEDICATION PROGRAMME (EADCMP). FEI Regulations, Chapter VII**

**8.1 SAMPLING. FEI Veterinary Regulations Chapter VII**

All horses competing at FEI Events may be subject to sampling for the presence of Prohibited Substances in accordance with the Anti-Doping and Controlled Medication Regulations (EADCMRs). Horses may be selected for sampling in accordance with obligatory testing, targeted or random sampling procedures. Refer to FEI Financial Charges for details of fees relating to Equine and Human Anti-Doping program (EADCMP), which OCs/NFs have the right to charge to the athlete (applicable for all FEI events worldwide).

**8.2 ELECTIVE TESTING. FEI Veterinary Regulations Article 1058**

Elective Testing may be carried out prior to an Event to check for the presence of Prohibited Substances. Please refer to <https://inside.fei.org/fei/cleansport/horses> for information and details.



### **XIII. HUMAN ANTI-DOPING**

Athletes can be tested at any FEI Event, by the FEI or by other Anti-Doping Organisations with Testing jurisdiction. Organisers will have the responsibility to provide facilities and staff/volunteers to facilitate such Testing if requested by the FEI as outlined in article 22.3 of the FEIs' Anti-doping Rules for Human Athletes (ADRHA).

The ADRHA rules are published on the FEI's website at <http://inside.fei.org/content/anti-doping-rules>

### **XIV. ADDITIONAL INFORMATION**

#### **1. THE FEI POLICY FOR ENHANCED COMPETITION SAFETY DURING THE COVID-19 PANDEMIC**

The FEI Policy for Enhanced Competition Safety during the Covid-19 Pandemic ("Policy") (<https://inside.fei.org/fei/covid-19/return-to-play/policy-tools>) is mandatory and applies for any FEI Event taking place **as of 1 July 2020**. The Policy has been developed based on currently accepted best practices by the WHO and US Center for Disease Control (CDC) and will be continually reviewed and updated as more information becomes available. It is not intended to replace the applicable guidance and policies from domestic government and health authorities, but to supplement their recommendations with sport specific considerations.

The OC shall submit the risk assessment and mitigation plan (including name and contact details of the person in charge) to the FEI as an annex to the Event Schedule, **at the latest ten (10) working days before the event's deadline for Definite Entries.**

Events for which the FEI has not received the documented risk assessment and mitigation measures plan in accordance with article 2.1.g) of the Policy **will be removed from the FEI calendar** in accordance with Article 112.3 of the FEI General Regulations.

#### **ASSUMPTION OF RISK / WAIVER OF LIABILITY**

In consideration of being allowed to participate in the Event and related activities, all Participants (as defined in the Policy) acknowledge, appreciate, and agree that:

1. Participation includes possible exposure to and illness from infectious diseases including but not limited to COVID-19. While particular rules and personal discipline may reduce this risk, the risk of serious illness and death does exist; and,
2. The Participants knowingly and freely assume all such risks, both known and unknown, even if arising from the negligence of the OC or others, and assume full responsibility for their participation; and,

3. The Participants willingly agree to comply with the stated and customary terms and conditions for participation as regards protection against infectious diseases. If, however, a Participant observes any unusual or significant hazard during his/her presence or participation, the Participant will remove himself/herself from participation and bring such to the attention of the nearest official immediately; and,
4. The Participants, for themselves and on behalf of their heirs, assigns, personal representatives and next of kin, HEREBY RELEASE AND HOLD HARMLESS THE OC AND THE FEI, their officers, officials, agents, and/or employees, other participants, sponsoring agencies, sponsors, advertisers, and if applicable, owners and lessors of premises used to conduct the event ("RELEASEES"), WITH RESPECT TO ANY AND ALL ILLNESS, DISABILITY, DEATH, or loss or damage to person or property, WHETHER ARISING FROM THE NEGLIGENCE OF RELEASEES OR OTHERWISE, to the fullest extent permitted by law.

The Participants confirm to have read this release of liability and assumption of risk agreement, fully understand its terms, understand that they have given up substantial rights.

## **2.INSURANCES AND NATIONAL REQUIREMENTS**

Equestrian sports involve inherent dangerous risks. To the greatest extent permitted by law, the FEI and the FEI Event Organiser shall NOT be liable for any damages relating to loss of property or injury of any kind to Athletes, Owners, Support Personnel or Horses at or in connection with an FEI Event and the FEI expressly excludes all such liability.

### **2.1 ATHLETES, OWNERS AND SUPPORT PERSONNEL**

#### **2.1.1 Personal Accident and Health Insurance**

It is your responsibility as an Athlete/Owner/ Support Personnel to ensure that you have adequate personal accident insurance in place to cover your participation at FEI Events and in particular to insure against any personal injury or medical expenses arising from an accident, injury or illness which may occur at a FEI Event.

You should check with your National Federation to confirm if your National Federation's insurance policy (if any) covers personal accidents and/or illnesses which may occur when you are attending at/participating in FEI Events.

If your National Federation does not have a personal accident/health insurance policy or if the National Federation's insurance policy does not cover personal accident or health claims, then you should obtain your own personal accident and health insurance policy to cover your attendance/participation at FEI Events.

#### **2.1.2 Personal Property Insurance**

You should also ensure that you are insured against property loss, theft or damage which may occur at an FEI Event.

Again, the advice is to check with your National Federation to confirm if they have

an insurance policy in place which would cover you in case of such property loss, theft or damage. If not, then you should obtain your own personal property insurance to cover such situations.

### **2.1.3 Press Equipment**

Press equipment and other items left in the Press workroom, Press lockers, the Press Tribune or anywhere on the showgrounds are left entirely at the owner's risk. The Organising Committee does not accept any responsibility for any loss or damage to such equipment or items. Members of the Press are advised not to leave any equipment or personal items unattended.

## **2.2 ATHLETES AND OWNERS**

### **2.2.1 Third Party Liability Insurance**

As an Athlete/Owner you are personally responsible for damages to third parties caused by you, your employees, Support Personnel, your agents or your Horses. You are, therefore, strongly advised to take out third-party liability insurance providing full coverage in relation to FEI Events at home and abroad, and to keep the policy up to date.

The FEI and the Organiser will NOT be responsible for any damage caused to third parties by you, your employees, Support Personnel, your agents or your Horses.

### **2.2.2 Additional Liability Information**

N/A

### **2.2.3 Horse Insurance**

As an Owner you should ensure that your Horses are adequately insured against any injuries or illnesses they may sustain while participating at a FEI Event.

## **3. PROTESTS/APPEALS**

To be valid, all Protests and Appeals must be made in writing and accompanied by a deposit of CHF 150.- or equivalent.

Protest and appeal forms are available on the FEI website:

Protest: <http://inside.fei.org/sites/default/files/FEI%20Protest%20Form.pdf>

Appeal: <http://inside.fei.org/sites/default/files/FEI%20Appeal%20Form.pdf>

## **4. DISPUTES**

In the event of any discussion concerning the interpretation of the schedule (in translated languages), the English version will be decisive.

## **5. MODIFICATION TO SCHEDULE**

In exceptional circumstances, together with the Approval of the Chefs d'Equipe, host NF delegate, if any, and the Ground Jury, the OC may change the schedule in order to clarify any matters arising from an omission or due to unforeseen circumstances. Any such changes must be notified to all Athletes and Officials

as soon as possible and they must be reported to the FEI by the Foreign Judge.

## **6.ADDITIONAL INFORMATION FROM THE ORGANISER**

### **Age of Athletes and Horses according to the Event's Category:**

<b>Event's Category</b>	<b>Age of Athletes</b>	<b>Age of Horses</b>
<b>Grand Prix/Grand Prix Special/ Grand Prix Freestyle/ Intermediate II/Intermediate A/ Intermediate B</b>	As of 16 <sup>th</sup> year	Min 8 y.o.
<b>Prix St. Georges/Intermediate I/ Intermediate I Freestyle</b>	As of 16 <sup>th</sup> year	Min. 7 y.o.
<b>CH-Y/CDIY/CDIOY</b>	As of 16 <sup>th</sup> year to end 21 <sup>st</sup> year	Min. 7 y.o.
<b>CH-J/CDIJ/CDIOJ</b>	As of 14 <sup>th</sup> year to end 18 <sup>th</sup> year	Min. 6 y.o.
<b>CH-P/CDIP/CDIOP</b>	As of 12 <sup>th</sup> year to end 16 <sup>th</sup> year	Min. 6 y.o.
<b>CH-Ch/CDICh/CDIOCh</b>	As of 12 <sup>th</sup> year to end 14 <sup>th</sup> year	Min. 6 y.o.
<b>CH-U25/CDIU25/CDIOU25</b>	As of 16 <sup>th</sup> year to end 25 <sup>th</sup> year	Min. 8 y.o.
<b>CDIAm</b>	As of 26 <sup>th</sup> year	Min. 7 y.o. Medium tour Min. 8 y.o.
<b>CDIYH</b>	As of 16 <sup>th</sup> year	Min. 5 y.o. – Max. 7 y.o.
<b>CH-M-YH-D</b>	As of 16 <sup>th</sup> year	5 y.o. / 6 y.o. / 7 y.o.

### **DEDUCTIONS FROM PRIZE MONEY AT COMPETITIONS:**

Full details of any deductions from prize money must be outlined in the schedule. This includes government taxes. If it is necessary for Organisers to deduct such taxes, they must provide participants with an official form indicating the amount of tax deducted.

The tax form must be provided to the athletes upon arrival and returned to the Organiser prior to departing.

### **IMPORTANT**

**The total amount of prize money shown for each Competition in the schedule must be distributed. (FEI General Regulations articles 127 and 128)**

The value of the 1st prize must not exceed 1/3 of the total prize money announced for the competition. Distribution of prize money: distributed to 25 % of participants. If there are between 5 and 19 athletes in the competition, min 5 prizes must be distributed.

If there are 4 or less athletes in the competition, the table below applies.

<b>Number of Starters</b>	<b>1</b>	<b>2</b>	<b>3</b>	<b>4</b>	<b>From 5 and above</b>
<b>1<sup>st</sup></b>	33%	33%	33%	33%	<b>All the prize money scheduled must be distributed among all placed athletes.</b>
<b>2<sup>nd</sup></b>		25%	25%	25%	
<b>3<sup>rd</sup></b>			20%	20%	
<b>4<sup>th</sup></b>				15%	
<b>Total distributed</b>	33%	58%	78%	93%	

The amount to be given to each athlete must be stated in the schedule.

## **XV. ANNEXES**

### **1. FEI ENTRY SYSTEM**

Please fill the form below in order to provide you and the other members of your committee or your IT Providers access to the FEI Entry System.

**FEI ID<sup>1</sup>:** 10004896

Name\*: Konarski

First Name\*: Marcin

E-Mail\*: office@stragona.pl

Access Rights\*: ☒ Admin<sup>2</sup>

☐ Consult<sup>3</sup>

---

**FEI ID<sup>1</sup>:**

Name\*:

First Name\*:

E-Mail\*:

Access Rights\*: ☐ Admin<sup>2</sup>

☐ Consult<sup>3</sup>

---

**FEI ID<sup>1</sup>:**

Name\*:

First Name\*:

E-Mail\*:

Access Rights\*: ☐ Admin<sup>2</sup>

☐ Consult<sup>3</sup>

---

<sup>1</sup>) If already have an FEI user account.

<sup>2</sup>) Provide you the required access to manage entries and substitutions and download entries/lists.

<sup>3</sup>) You are just able to consult and download the entries/lists.

\*) Mandatory Fields

## **2. RESULTS**

In order to proceed with the results publication and for qualification purposes the FEI requires results to be uploaded directly on the FEI Database within two days after the conclusion of the event.

All relevant information, file format and tutorial can be found on this page:

<http://inside.fei.org/fei/your-role/Organisers/dressage/results-forms>

If you or your provider are unable to produce the required files, results will be accepted by e-mail to [dressageresults@fei.org](mailto:dressageresults@fei.org), in the proper XML format immediately after the event. Please refer to compulsory format for CDIs; the file can be downloaded using the following link: <http://inside.fei.org/fei/your-role/Organisers/xml-format>

All results must include FEI Passport Registration number of horses and FEI ID number of Athletes.

Please note that as per Art 109.6 (GR): OCs of International Events must inform the FEI and NFs whose teams or individuals have taken part, of the results and prize money paid to each placed Athlete and team, within two (2) days following the Event for all disciplines managed by an online entry system and five (5) days for all other discipline(s), unless otherwise specified for qualification and ranking reasons as communicated by the FEI. Failure from organisers of International Events to provide the FEI with the appropriate result(s) and/or prize money information by the aforesaid deadline and/or in the aforesaid format shall entail a warning for the first violation and thereafter a fine of CHF 1'000.- per violation.