

This document contains:

- The Event Covid-19 risk assessment and risk mitigation plan in accordance with the [FEI Policy for Enhanced Competition Safety during the Covid-19 Pandemic](#)
- The Event Approved Schedule

Given the current covid-19 situation, please note that the FEI's approval of a Schedule should not be taken as an absolute guarantee that the Event will definitely go ahead. The decision whether the Event can take place must be made by the OC and NF in close consultation with the applicable domestic government and public health authorities. It is the responsibility of each Participant to check the status of the Event prior to planning his/her travel to the Event.

Risk assessment for COVID-19

The questions below will enable OCs to review the additional considerations specific to sports, and thus inform their risk assessment of COVID-19 associated with their Event. This will help OCs understand and manage any additional risk from COVID-19.

The risk assessment should be reviewed and reassessed regularly during the planning phase and updated immediately prior to the transition to the operational phase, especially in light of the rapidly evolving nature of the outbreak. Reference should be made to the latest technical guidance and situation reports on the WHO website.

The risk assessment for COVID-19 associated with the Event must be coordinated and integrated with the host country's national risk assessment for COVID-19. The person completing the questionnaire should include input from the local public health authorities, consult WHO's latest technical guidance and ensure that there is an up-to-date evaluation of the epidemiological situation.

Please answer Yes (1) or No (0) to the following questions to determine a risk assessment score that incorporates factors specific to sporting events

Additional risk of COVID-19 to the sporting event	Yes (1)/No (0)	Score
Will the event be held in a country that has documented active local transmission of COVID-19 (community spread)?	1	1
Will the event be held in a single venue or multiple venues/cities/countries? (single venue = 0; multiple venues = 1)	0	0
Will the event include international participants (athletes and spectators) from countries that have documented active local transmission of COVID-19 (community spread)? (NB: if the Events does not involve spectators, please clarify this in the comments to the questions in relation to spectators in the "Mitigation Checklist" sheet)	1	1
Will the event include a significant number of participants (athletes or spectators) at higher risk of severe COVID-19 disease (e.g., people over 65 years of age or people with underlying health conditions)?	0	0
Will the event include sports that are considered at higher risk of spread for COVID-19 (eg, contact sports)?	0	0
Will the event be held indoors? (Yes = 1; No = 0)	0	0
Total COVID-19 risk score		2

Mitigation checklist for COVID-19

Mitigation measures assess the current effort and planning to reduce the risk of spread of COVID-19 disease for the event. As mitigation measures can reduce the overall risk of the sporting event contributing to the spread of COVID-19, they should be taken into account after the risk assessment has occurred to gain a clearer understanding of the overall risk of transmission and further spread of COVID-19, should the event be held. Together with the risk assessment score, the mitigation measure will contribute to the decision matrix and influence the assessment of the overall risk of transmission and further spread of COVID-19 in relation to the event.

Topic	Key consideration	Score Yes/Completed (2), Maybe/In progress (1), No/Not considered (0)	Weighting	Total score	Comments
Understanding of the overview of the current COVID-19 situation by the OC	Have the relevant OC and responsible staff been informed about the latest available guidance on the COVID-19 outbreak (official web resources available from WHO, CDC, ECDC, UN, local public health authorities)? And are the OC and staff concerned committed to following the available guidance?	2	1	2	
	Is the OC aware of global and local daily situation reports as provided by WHO or local public health authorities?	2	1	2	
	Do the OC and responsible staff understand the risks and transmission routes of COVID-19, the steps that Event attendees can take to limit spread, the recognized best practices (including respiratory etiquette, hand hygiene, physical distancing, etc.), and the travel restrictions adopted by different countries that may affect the Event?	2	1	2	
Event emergency preparedness and response plans	Has a contingency medical response plan for COVID-19 been developed for the Event?	2	3	6	
	Does the contingency medical response plan include information about how attendees should interact with the host country healthcare system (e.g. hotline/helpline telephone number, medical teams and first-aid points for the Event, local health care system)?	2	3	6	
	Is there an Emergency COVID-19 Outbreak Response Coordinator/Team in the OC or other structure structure for the Event with defined roles and responsibilities, coordinating the health preparedness and response planning for the outbreak?	2	2	4	
	Has the host country or OC requested support from WHO and/or local public health authorities ?	2	3	6	
	Has the OC acquired the following supplies to help reduce the risk of transmission of COVID-19?				
	Personal protective equipment (e.g. masks, gloves, gowns) for onsite medical personnel	2	3	6	
	Hand sanitizer and alcohol rubs/gels, tissues, frequently replaced soap canisters and closed bins for safe disposal of hygienic materials (e.g. tissues, towels, sanitary products) in washrooms and changing rooms	2	3	6	
	Hand sanitizers and alcohol rubs for all entrances and throughout the venue	2	3	6	
	If a person feels unwell/ shows symptoms of an acute respiratory infection during the Event:				
	Is there a procedure for athletes or spectators to clearly identify whom to contact and how to do so if they or other Event participants feel unwell?	2	3	6	

	Is there a protocol on whom the OC should contact in the host country to report suspected cases and request testing and epidemiological investigations?	2	3	6	
	Are first-aid services or other medical services in-place and equipped to support patients with respiratory symptoms?	2	2	4	
	Are there isolation rooms or mobile isolation units available onsite?	2	2	4	
	Are there any designated medical facilities that manage patients with COVID-19 infection in the host country?	2	2	4	
	Are there transportation services with trained medical professionals available to transport critically ill patients with severe acute respiratory infections to a hospital or to evacuate them from the host country, if necessary?	2	2	4	
	Has a cleaning schedule been developed to ensure the venue is clean and hygienic – wiping surfaces and any equipment regularly with disinfectant is strongly recommended (before, during and after the event and between each round of competition)?	2	3	6	
	Are there established screening measures , including temperature checks in place for participants at the point of entry, venues, routes and on-site medical facilities (first-aid points)? (Please specify in Comments what these screening measures include)	2	3	6	
	Is the host country conducting COVID-19 laboratory diagnostic tests ? (If Yes, please specify in comments the type of COVID-19 diagnostic test used)	2	3	6	RT-PCR genetic test / Genetic screening test / Antigen test
	Does the host country have a national public health emergency preparedness and response plan that can address severe respiratory diseases, including COVID-19?	2	2	4	
	Is there a preliminary agreement by the host country to provide care for any COVID-19 cases connected with the Event?	2	3	6	
	If the Event is for a duration of 14 days or longer, does the medical response plan for the event include resources and protocols for managing all public health interventions that would be necessary and supporting the national public health authorities if participants are infected and become unwell at the Event? (If the event is for less than 14 days, please score 0)	0	3	0	
	If the Event is for less than 14 days, does the medical response plan include protocols for OCs to notify all participants of possible exposure to COVID-19 if the OCs are made aware of any suspected or confirmed cases that attended the Event? (If the event is for 14 days or longer, please score 0)	0	3	0	
Stakeholder and partner coordination	Is there an established mechanism for collaboration and coordination between the health and security sectors , which is considered as crucial?	2	2	4	
	Are there agreed, clear and easily understood processes in place for reporting to external multi-sectoral stakeholders (including surveillance authorities, WHO, CDC, ECDC, etc.) and disseminating risk communication messages (Media)?	2	2	4	
Command and control	Is there a decision-making authority/body and an agreed procedure to modify, restrict, postpone or cancel the Event related to the evolving COVID-19 outbreak?	2	3	6	
	Are there arrangements to activate a strategic health operations centre if there are suspected COVID-19 cases in connection with the Event?	0	2	0	
	Have the OC and staff undergone training and exercises on personal safety procedures and emergency mitigation measures (including those specifically listed in this checklist)?	2	3	6	
	Is there a risk communication strategy for the Event in regard to COVID-19?	2	3	6	

Risk communication	Is there a designated person(s) to lead media activities and tasked with managing all external communications with national and international government officials, the general public, and the media? (If yes, please identify the spokesperson in comments)	2	2	4	
	Has there been monitoring of national and international media and social media established for rumours to be able to counter them early? (Please explain in the comments what protocols are in place for counter messaging)	2	2	4	
	Has coordination been set up with major official media channels and social media sites such as Twitter, Facebook and Instagram so that messaging can be coordinated with, and assisted by, the platforms to provide targeted messaging from OCs (including messaging to counter fake news and rumours, and proactive messaging about the status of the sporting event, including changes)?	2	2	4	
Public health awareness of COVID-19 before and during the event	Has public health advice on clinical features of COVID-19, preventive measures, especially respiratory etiquette, hand hygiene practices, and physical distancing, been shared with all staff involved in the Event, athletes, the public, and personnel of all relevant stakeholders?	2	3	6	
	Has information on the at-risk populations been provided to all athletes, the public and others so they may make an informed decision on their attendance based on their personal risks?	2	3	6	
	Has public advice included information on the meaning of the following measures: quarantine, self-isolation and self-monitoring ?	2	2	4	
Surge capacity	Are there any surge arrangements in place in the event of a public health emergency during the Event - (i.e. suspected and confirmed cases of COVID-19?				
	Do these surge arrangements include funding for mitigation measures?	2	3	6	
	Do these surge arrangements include stockpiles of equipment (e.g. personal protective equipment, etc.)	2	3	6	
	Do these surge arrangements include training of extra staff?	2	2	4	
	Do these surge arrangements include volunteers?	0	2	0	
Specific mitigation measures	Will there be daily health checks of athletes/competitors?	2	2	4	
	Will the athletes be separated from other groups , such as officials, support staff and spectators, to limit transmission?	2	2	4	
	Are there measures in place to limit the sharing of equipment, water bottles, towels , etc.?	2	3	6	
	Will athletes be given closed containers to allow for the safe disposal or storing of all hygienic materials (e.g. tissues, towels, etc.)?	0	3	0	
	Will the Event have designated seating for all spectators?	2	3	6	
	Does the designated seating provided allow for physical distancing between spectators (minimum of 1 metre)?	2	2	4	
	Have pre-travel health checks been performed on all athletes to ensure underlying co-morbidities, medications, allergies, etc. are documented?	0	2	0	

Sum of mitigation measures	196
Total mitigation score (%)	89

196

Event overall risk score

The decision matrix takes the risk score and the mitigation score to provide a colour determination. This colour determination identifies the total risk of transmission and further spread of COVID-19 in relation to the Event. The "Colour Determination" key below the decision matrix describes the total risk for each colour.

Total COVID-19 risk score (from "Risk Assessment" Tab)	2
--	---

Total mitigation score (from "Mitigation Checklist" Tab)	89
--	----

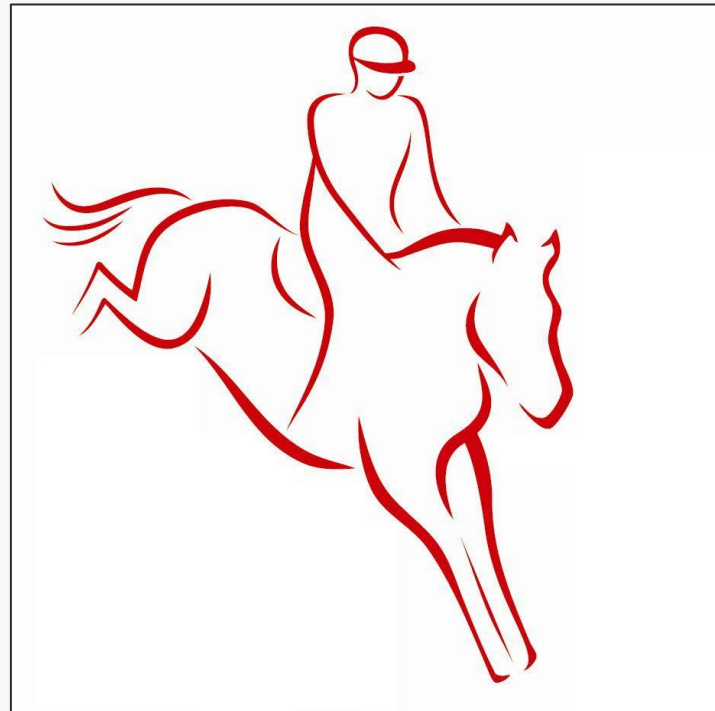
Risk Vs. Mitigation Matrix

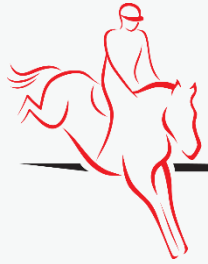
Total Risk Assessment Score	Very Prepared to Mitigate COVID-19 Impacts (76-100)	Somewhat Prepared to Mitigate COVID-19 Impacts (51-75)	Somewhat Unprepared to Mitigate COVID-19 Impacts (26-50)	Very Unprepared to Mitigate COVID-19 Impacts (0-25)
0 - Negligible	Very low	Very low	Very low	Very low
1 - Very Low Risk	Very low	Very low	Low	Low
2 - Low Risk	Low	Low	Low	Moderate
3 - Moderate Risk (low-moderate)	Low	Moderate	Moderate	Moderate
4 - Moderate Risk (high-moderate)	Moderate	Moderate	High	Very High
5 - High Risk	High	High	Very High	Very High
6 - Very High Risk	Very High	Very High	Very High	Very High

KEY FOR COLOUR DETERMINATION OF OVERALL RISK	
VERY LOW	Overall risk of transmission and further spread of COVID-19 in relation to the Event is considered <u>very low</u> .
LOW	Overall risk of transmission and further spread of COVID-19 in relation to the Event is considered <u>low</u> . Recommend checking whether mitigation measures can be strengthened.
MODERATE	Overall risk of transmission and further spread of COVID-19 in relation to the Event is considered <u>moderate</u> . Recommend <u>significant</u> efforts to improve mitigation measures or reduce risk of transmission (decrease risk assessment score).
HIGH	Overall risk of transmission and further spread of COVID-19 in relation to the Event is considered <u>high</u> . Recommend <u>significant</u> efforts to improve <u>both</u> mitigation measures and reduce risk of transmission (decrease risk assessment score).
VERY HIGH	Overall risk of transmission and further spread of COVID-19 in relation to the Event is considered <u>very high</u> .

FEI European Pony Championships - Strzegom 2021

RISK MITIGATION PLAN



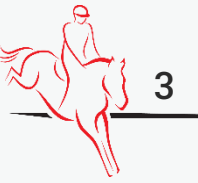


Introduction

- Due to Covid-19 pandemic, we kindly ask you to familiarize with this document to minimise the risk of infection.
- While following these Guidelines is aimed to reduce the risk of COVID-19 infection during the competition, the risk is not eliminated.



Introduction



- Every Participant of the event is obliged to familiarize with these Guidelines. Negligence of acknowledgment of the Guidelines doesn't relive from the duty of following the rules
- All the Participants of the event (excluding Organiser's employees) are taking part voluntarily and at their own responsibility.
- All Participants are required to comply with the rules of social coexistence and conduct in accordance with applicable laws and regulations of these Guidelines and other regulations in force at the competition, established by the Organiser.
- All deciding to take part in the event (in any role) and allowed to participate in the event by Organiser during the pandemic are doing so at their own risk.
- The Organising Committee doesn't take any responsibility for infection with Covid-19 of anyone taking part in the event.

+ Participant of the event

A Participant of the event is a person whose presence on the showground is essential for the sports competition, in particular:

- Competitors
- Supporting personnel - trainer, groom, horse owner and a person responsible for a minor athlete
- Person responsible for horse transport
- Officials
- Event staff
- Security staff
- TV operators
- Media representatives
- Spectators

+ Restrictions of participation

The following restriction of participation in the event must be followed:

- The event takes place with a limited number of spectators - in accordance with current regulations in Poland.
- All participants of the event must wear a mask that covers the mouth and nose or keep 1,5m of social distance
- The Press Office will work only remotely (online). The number of Press Office Staff will be limited.
- The Organiser is going to issue a limited number of PRESS and PHOTO accreditations – two accreditations per editorial team /except for Official photographers of the Organiser and the FEI/.

+ The procedure of entering the showground

BEFORE ENTERING TO THE VENUE YOU HAVE TO PRESENT /APPLIES TO ALL AGES/:

Covid-19 tests:

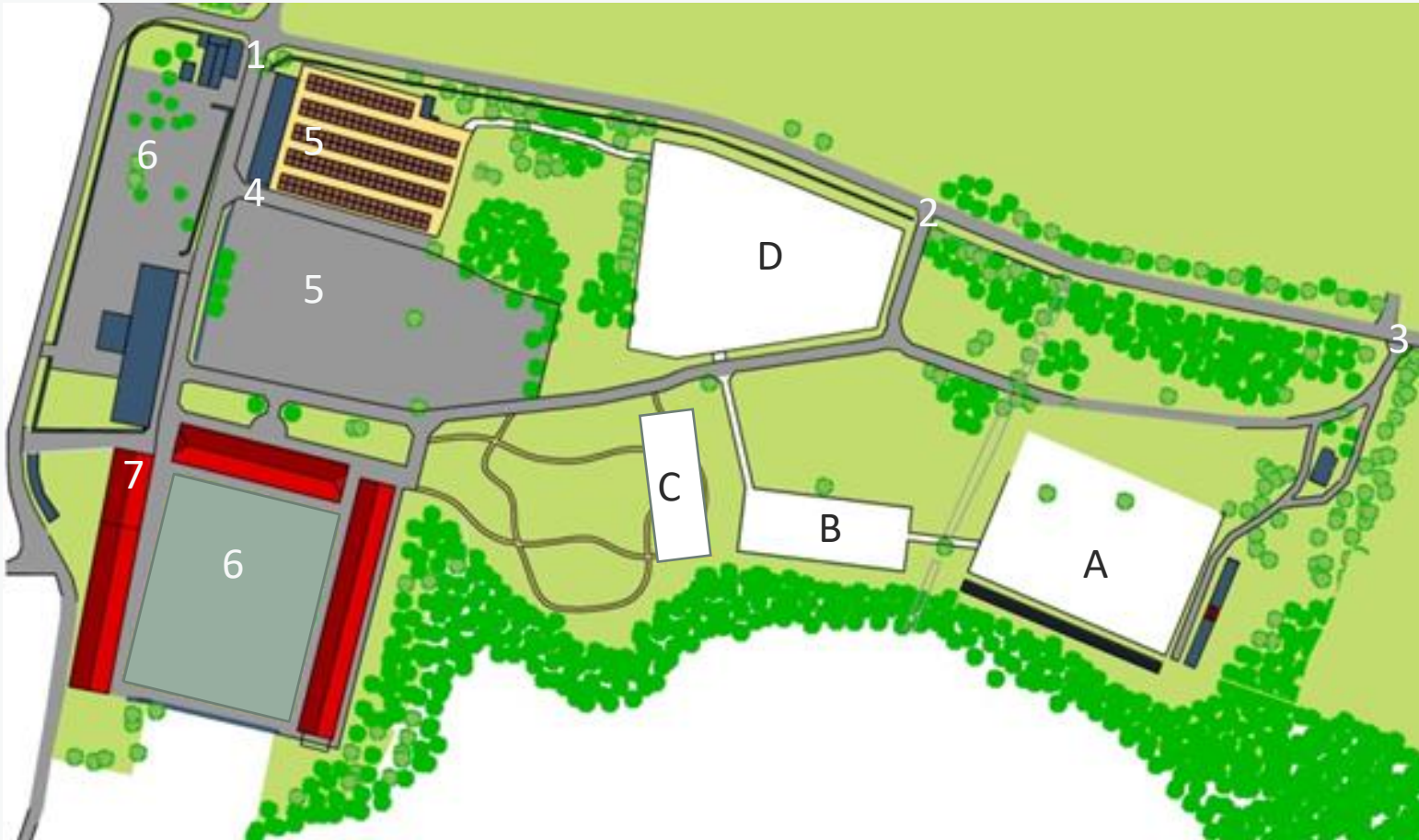
- All foreign participants **have to presents a negative Covid-19 test result** (made later than 48 hours before crossing the border)
- Type of test: Official PCR or antigen test with certificate in English

OR

Certificat of the Vaccination

This applies to all people with a valid vaccination certificate, with a vaccine that has been accepted in the European Union /minimum 14 days after complete vaccination/.

+ MAP OF THE SHOWGROUND



1. Gate I
2. Gate II
3. Gate III
4. Stable gate
5. Stable
6. Car park
7. Isolation space

+ Entry authorisation

Gate I

- ❖ Competitors
- ❖ Supporting personnel
- ❖ Person responsible for horse transport
- ❖ Officials
- ❖ Event staff
- ❖ Security staff

Gate II

- ❖ Officials
- ❖ Sponsors
- ❖ Exhibitors
- ❖ Catering
- ❖ Event Staff
- ❖ Security staff

Gate III

- ❖ Spectators
- ❖ Media representatives
- ❖ TV operators
- ❖ Event Staff
- ❖ Security staff

+ Security on the showground

1. Each Participant must :

- a) wear a face mask covering mouth and nose unless there's a 1,5m distance from other Participants in the same space; this rule excludes an Athlete sitting on the horse;
- b) systematically sterilise hands at the stations located in toilets area, show office, competition zone, stables.

2. The Organiser will assign a Steward cooperating with the Organiser, who will coordinate and supervise the security system, especially the logistics of Participants, access to sanitizers, covering of mouth and nose by Participants.

3. All the rooms used during the event will be disinfected after each day of the event.

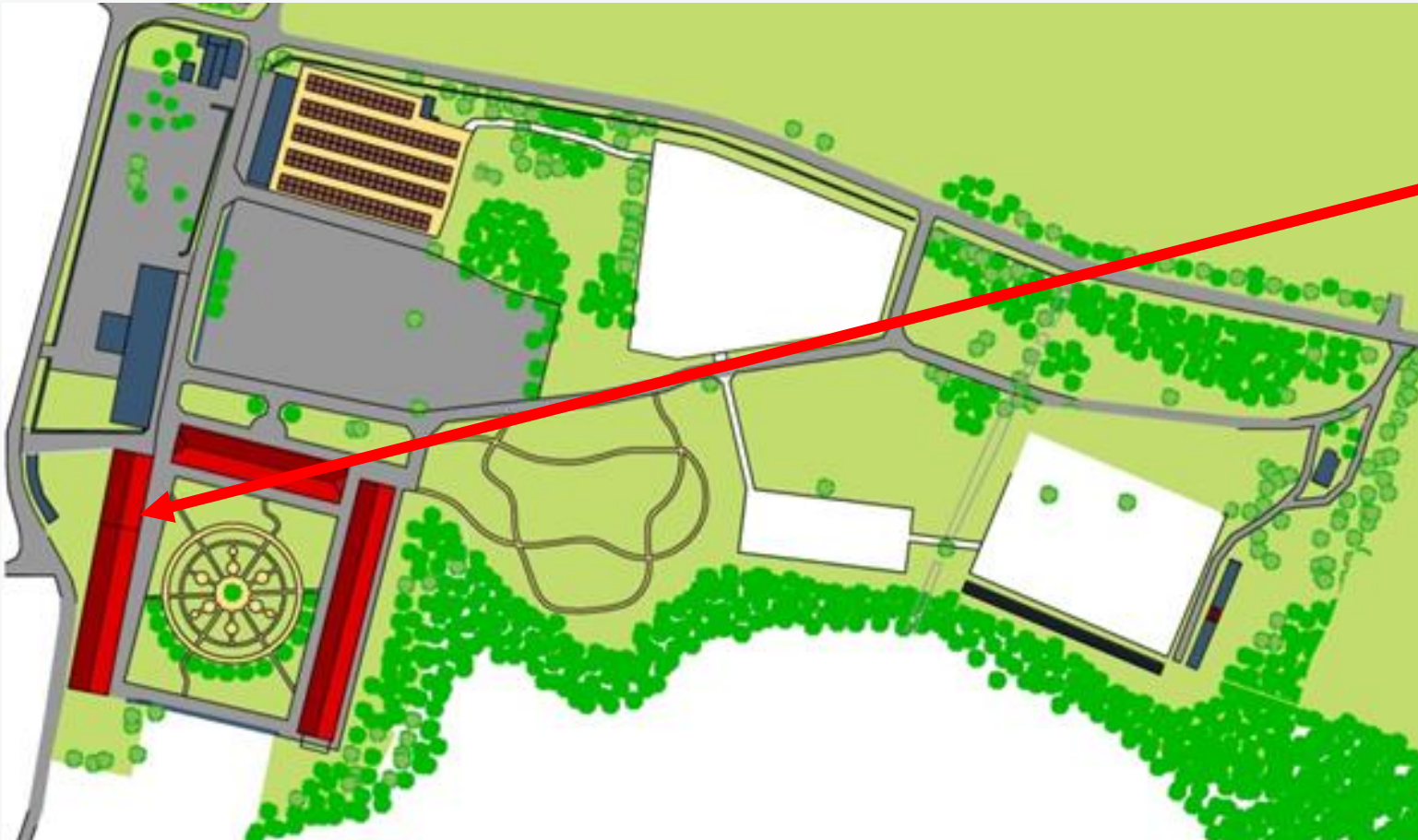
+ Security on the showground

The most common symptoms of Covid-19 are fever, dry cough and tiredness. Other symptoms that are less common and may affect some patients include: aches and pains, nasal congestion, headache, conjunctivitis, sore throat, diarrhoea, loss of taste or smell or a rash on skin or discoloration of fingers or toes. These symptoms are usually mild and begin gradually (Source: WHO website: <https://www.who.int/emergencies/diseases/novel-coronavirus-2019/question-and-answers-hub/q-a-detail/q-a-coronaviruses>) and the Participants with symptoms must immediately:

1. Go to the isolation space assigned by the Organiser.
2. Call the Organizer: 0048 601 769 772.

The Organiser will contact the Regional Sanitary and Epidemiological Station, competent for the showground of the event, or the 24-hour NFZ hotline 800-190-590.

+ Security on the showground



Isolation space for individuals
with symptoms of Covid-19



+ Limitations and guidelines for specific groups of Participants

Athletes

- Athletes can access Car Park zone, Stables, Show Office and Competition zone where they need to keep 1,5m of social distance.
- Minor Athletes can be accompanied by their representative.
- Athletes are not allowed in the Ground Jury box. All the issues are solved remotely. All official protests are managed in the Show Office as per PZJ and FEI rules.
- Cross Country and Show jumping test walking takes place keeping the 1,5m social distance rule.



+ Limitations and guidelines for specific groups of Participants

TRAINERS

- Trainers can access the Car Park zone, Stables, Show Office and Competition zone, where they need to keep 1,5m of social distance.
- Because of limitations of direct contact, before dressage, jumping and cross country, test trainers give their instructions from the outside of the warm up area and keep the 1,5m social distance.
- Before the jumping test, the trainer is allowed to enter the warm up arena only 15 minutes before the rider's start.



+ Limitations and guidelines for specific groups of Participants

GROOMS AND SUPPORTING TEAM

- Grooms can access the Car Park zone, Stables and Competition zone outside the warm up arena and competition area where they need to keep 1,5m of social distance.
- In case a rider is not accompanied by a trainer, the groom is allowed to enter the warm up area only 15 minutes before the rider's start.
- The Supporting Team can access the Car Park zone, Stables and Competition zones where they need to keep 1,5m of social distance.



+ Limitations and guidelines for specific groups of Participants

OFFICIALS

- Officials (i.e. judges, scribes, Ground Jury assistants), while being indoors (i.e. judge's hut in dressage, GJ box in jumping test, control centre in cross country test), must wear face mask covering mouth and nose.
- Only Officials and essential staff responsible for running the competition are allowed in GJ box area.
- Officials will be given disposable gloves.
- Officials will have access to separate toilet.

+ Limitations and guidelines for specific groups of Participants

CAR PARK ZONE

- Only Participants of the Event have access to Car Park Zone.
- A distance of 1,5m between vehicles has to be kept.
- All Participants in the Car Park Zone have to keep 1,5 metre distance
- Gatherings of more than 15 people are strictly forbidden in the Car Park Zone.

+ Limitations in the Show Office

- The number of people allowed in the Show Office is determined on the square meter space- the coefficient should be 15m² per 1 person, under the condition that there's one person being served at the post.
- Access to the Show Office is limited to Staff, Officials, Athletes and Supporting Team.



+ Limitations for media

1. Press Office will work only remotely (online).
2. The number of Press Office Staff will be limited.
 - The Organiser is going to issue a limited number of PRESS and PHOTO accreditations - two per editorial office /except Official photographers of the Organiser and the FEI/
 - Only active journalists, photographers or television crews working for registered media and official internet services can apply for accreditation. No accreditation will be given to bloggers or freelancers, unless they have a documented cooperation with beforementioned media.
3. Access to the showground is only given to:
 - Press Office Staff - press staff, social media staff, photo staff, video staff, Media Partners representatives
 - FEI accredited media - FEI TV, photographer
 - TV coverage staff
 - Online coverage staff
 - Accredited media
4. The Organiser will **not** provide a Press Office or Media Room for accredited media

All Media representatives are to fill in the health check form. Also, they must inform the Organiser about the most common symptoms of Covid 19.

The most common symptoms of Covid-19 are fever, dry cough, and tiredness. Other symptoms that are less common and may affect some patients include aches and pains, nasal congestion, headache, conjunctivitis, sore throat, diarrhea, loss of taste or smell or a rash on skin or discoloration of fingers or toes. These symptoms are usually mild and begin gradually. (Source: WHO website: <https://www.who.int/emergencies/diseases/novel-coronavirus-2019/question-and-answers-hub/q-a-detail/coronavirus-disease-covid-19>).

+ Limitations for sponsors

The number of sponsor representatives who will have access to the showground and to the specific zones will be limited.

- The Organiser allows the entry of a group of max. of 10 persons under the condition of keeping 1,5m social distance rule or using masks covering the nose and mouth
- The Organiser will open a hospitality zone for Sponsors with a limited number of people
- Sponsor representatives are only allowed to access the Competition zone

All Sponsor representatives are to fill in the health check form. Also, they must inform the Organiser about the most common symptoms of Covid 19.

The most common symptoms of Covid-19 are fever, dry cough, and tiredness. Other symptoms that are less common and may affect some patients include aches and pains, nasal congestion, headache, conjunctivitis, sore throat, diarrhoea, loss of taste or smell or a rash on skin or discoloration of fingers or toes. These symptoms are usually mild and begin gradually. (Source: WHO website: <https://www.who.int/emergencies/diseases/novel-coronavirus-2019/question-and-answers-hub/q-a-detail/coronavirus-disease-covid-19>).

+ Limitations for spectators

The number of spectators who will have access to the showground will be limited.

- The Organiser allows entering of spectators under the condition of keeping 1,5m social distance rule or using of masks or face shield, covering the nose and mouth.
- Only half of the seats at the grandstands can be occupied.

All spectators are to fill in the health check form. Also, they must inform the Organiser about the most common symptoms of Covid 19.

The most common symptoms of Covid-19 are fever, dry cough, and tiredness. Other symptoms that are less common and may affect some patients include aches and pains, nasal congestion, headache, conjunctivitis, sore throat, diarrhoea, loss of taste or smell or a rash on skin or discoloration of fingers or toes. These symptoms are usually mild and begin gradually. (Source: WHO website: <https://www.who.int/emergencies/diseases/novel-coronavirus-2019/question-and-answers-hub/q-a-detail/coronavirus-disease-covid-19>).



+ Limitations for trade stands

1. The number of trade stands at the event is limited.
2. All the stands at the event must follow the Guidelines of Polish government on providing safety for employees and customers during the pandemic.
 - All staff serving customers must wear gloves and masks
 - All individuals queuing should keep min. 1,5m distance
 - At the entrance and at the till point there should be hand sanitizer available

All the staff of trade stands is to fill in the health check form. Also, they must inform the Organiser about the most common symptoms of Covid 19. The most common symptoms of Covid-19 are fever, dry cough, and tiredness. Other symptoms that are less common and may affect some patients include aches and pains, nasal congestion, headache, conjunctivitis, sore throat, diarrhoea, loss of taste or smell or a rash on skin or discoloration of fingers or toes. These symptoms are usually mild and begin gradually. (Source: WHO website: <https://www.who.int/emergencies/diseases/novel-coronavirus-2019/question-and-answers-hub/q-a-detail/coronavirus-disease-covid-19>).



+ Limitations for hospitality/ catering

All the stands at the event must follow the Guidelines of Polish government on providing safety for employees and customers during a pandemic.

- All cooks and staff serving customers must wear gloves and masks
- All individuals queuing should keep min. 1,5m distance
- At the order collecting points and till points there should be hand sanitizer available
- Tables should have a min. 1,5m distance.
- All the tables should be disinfected after each use.

All the hospitality/catering staff is to fill in the health check form. Also, they must inform the Organiser about the most common symptoms of Covid 19. The most common symptoms of Covid-19 are fever, dry cough, and tiredness. Other symptoms that are less common and may affect some patients include aches and pains, nasal congestion, headache, conjunctivitis, sore throat, diarrhoea, loss of taste or smell or a rash on skin or discoloration of fingers or toes. These symptoms are usually mild and begin gradually. (Source: WHO website: <https://www.who.int/emergencies/diseases/novel-coronavirus-2019/question-and-answers-hub/q-a-detail/coronavirus-disease-covid-19>).

+ Appendix

FORM - HEALTH INTERVIEW



HEALTH INTERVIEW

- 1) Were you diagnosed with SARS CoV-2 in the last 14 days?
☐ Yes ☐ No
- 2) Did you have contact with the person diagnosed with SARS CoV-2 in the last 14 days?
☐ Yes ☐ No
- 3) Is your child/pupil or anyone in your household in quarantine now?
☐ Yes ☐ No
- 4) Do you or anyone in your household have the most common symptoms of Covid 19.
The most common symptoms of Covid-19 are fever, dry cough, and tiredness. Other symptoms that are less common and may affect some patients include aches and pains, nasal congestion, headache, conjunctivitis, sore throat, diarrhoea, loss of taste or smell or a rash on skin or discoloration of fingers or toes. These symptoms are usually mild and begin gradually.
☐ Yes ☐ No
- 5) Does anyone in your household had any symptoms mentioned above in the last 14 days?
☐ Yes ☐ No

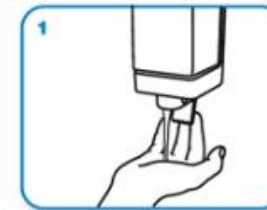
+ Appendix



CLEAN HANDS PROTECT AGAINST INFECTION



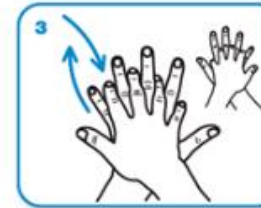
Wet hands with water



apply enough soap to cover all hand surfaces.



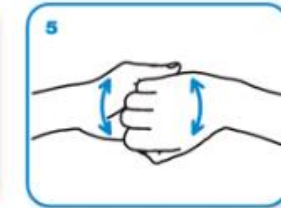
Rub hands palm to palm



right palm over left dorsum with interlaced fingers and vice versa



palm to palm with fingers interlaced



backs of fingers to opposing palms with fingers interlocked



rotational rubbing of left thumb clasped in right palm and vice versa



rotational rubbing, backwards and forwards with clasped fingers of right hand in left palm and vice versa.



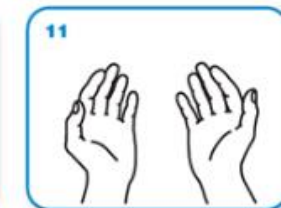
Rinse hands with water



dry thoroughly with a single use towel



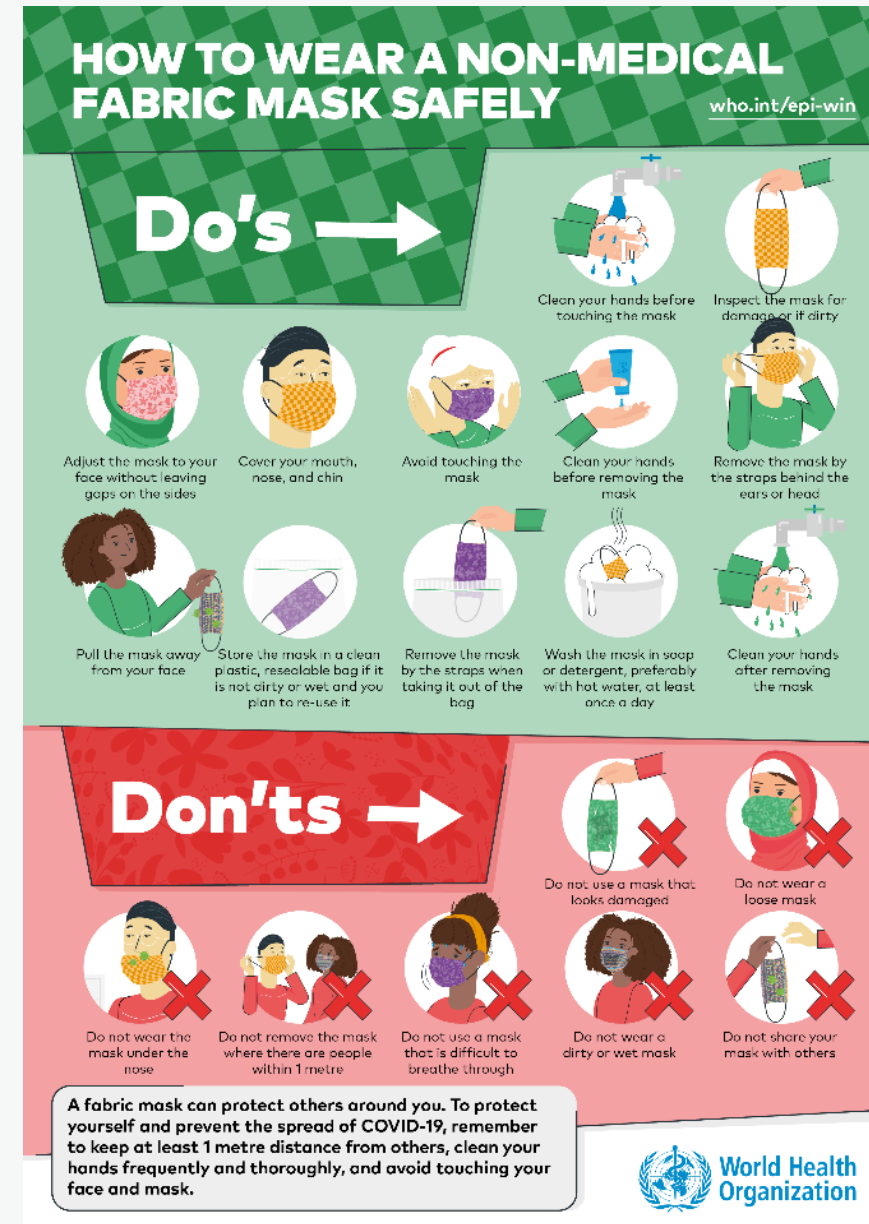
use towel to turn off faucet



...and your hands are safe.

+ Appendix

HOW TO WEAR MASK SAFELY



I. DENOMINATION OF THE EVENT

Venue: European Pony Championships Strzegom 2021

Date: 11-15.08.2021

NF: POL

Indoor: ☐

Outdoor: ☒

EVENT CATEGORIES:

CSIO5*	<input type="checkbox"/>	CSI5*-W	<input type="checkbox"/>	CSI5*	<input type="checkbox"/>	CSIU25-A	<input type="checkbox"/>	CSIU25-B	<input type="checkbox"/>
CSIO4*	<input type="checkbox"/>	CSI4*-W	<input type="checkbox"/>	CSI4*	<input type="checkbox"/>	CSIY-A	<input type="checkbox"/>	CSIY-B	<input type="checkbox"/>
CSIO3*	<input type="checkbox"/>	CSI3*-W	<input type="checkbox"/>	CSI3*	<input type="checkbox"/>	CSIJ-A	<input type="checkbox"/>	CSIJ-B	<input type="checkbox"/>
CSIO2*	<input type="checkbox"/>	CSI2*-W	<input type="checkbox"/>	CSI2*	<input type="checkbox"/>	CSIch-A	<input type="checkbox"/>	CSIch-B	<input type="checkbox"/>
CSIO1*	<input type="checkbox"/>	CSI1*-W	<input type="checkbox"/>	CSI1*	<input type="checkbox"/>	CSIV-A	<input type="checkbox"/>	CSIV-B	<input type="checkbox"/>
CSIOY	<input type="checkbox"/>			CSIL1*	<input type="checkbox"/>	CSIAm-A	<input type="checkbox"/>	CSIAm-B	<input type="checkbox"/>
CSIOJ	<input type="checkbox"/>			CSIYH2*	<input type="checkbox"/>	CSIP	<input type="checkbox"/>		
CSIOp	<input type="checkbox"/>			CSIYH1*	<input type="checkbox"/>				
CSIOCh	<input type="checkbox"/>								

Championship ☒

Games ☐

II. GENERAL CONDITIONS

- FEI Statutes, 24th edition, effective 19 November 2019
- FEI General Regulations, 24th edition, 1st January 2020, updates effective 1st January 2021
- FEI Veterinary Regulations, 14th edition, 1 January 2018, updates effective 1st January 2021
- The Jumping Rules and its Annexes, 26th edition 1 January 2018, updates effective 1 January 2021
- <https://inside.fei.org/fei/regulations/jumping>
- CSI/CSIO Prize Money requirements 2020 – To be applied also for 2021
- <https://inside.fei.org/sites/default/files/Final%20CSIs-CSIOs%20-%202020.pdf>
- Longines Rankings – Groups Categories 2020 – To be applied also for 2021
- <https://inside.fei.org/sites/default/files/Final%20Longines%20Ranking%20Groups%20-%202020.pdf>
- Equine Anti-Doping and Controlled Medication Regulations (EADCMR), 3rd Edition, effective 1st January 2021
- FEI Anti-Doping Rules for Human Athletes (ADRHA), based upon the 2021 WADA Code, effective 1st January 2021
- The FEI Policy for Enhanced Competition Safety during the Covid-19 Pandemic, effective as of 1 July 2020 (updated 12 October 2020) and until further notice
- All subsequent published revisions/updates, the provisions of which will take precedence.

THE ANNEXE(S) IS/ARE PART OF THIS APPROVED AND SIGNED SCHEDULE AND MUST BE DISTRIBUTED TO ALL OFFICIALS AND NFs AND IS AVAILABLE TO OTHERS UPON REQUEST

Approved by the FEI, Lausanne, on 29/06/2021, updated on 13/07/2021, 28/07/2021, 29/07/2021, 10/08/2021.

Marco Fusté
Jumping Director

NB: No modifications to the approved Schedule will be accepted less than two weeks prior to the event. Additionally, no change may be made to a Longines Ranking competition once the schedule has been approved. Prizes in kind, to be accepted as prize money to count for Longines Ranking competitions and total event prize money, must be easily convertible into cash (GRs Art. 127).

TABLE OF CONTENTS

I.	DENOMINATION OF THE EVENT	1
II.	GENERAL CONDITIONS	1
III.	THE FEI CODE OF CONDUCT FOR THE WELFARE OF THE HORSE	3
IV.	GENERAL INFORMATION	4
1.	ORGANISER	4
2.	ORGANISING COMMITTEE	4
3.	EVENT DIRECTOR	4
4.	STABLE MANAGER.....	4
5.	ANNOUNCER	4
V.	OFFICIALS	5
VI.	INVITATIONS	6
1.	GENERAL.....	6
VII.	ENTRIES	7
1.	ENTRY DATES AND ENTRY FEES.....	7
2.	OTHER FEES	8
3.	NO-SHOWS/LATE WITHDRAWALS	9
VIII.	TIMETABLE.....	10
IX.	COMPETITION DETAIL.....	11
X.	FACILITIES OFFERED.....	15
1.	ATHLETES	15
2.	GROOMS.....	15
XI.	LOGISTICAL/ADMINISTRATIVE/TECHNICAL INFORMATION	16
1.	DRAW	16
2.	COMPETITION ARENA(S)	16
3.	PRACTICE ARENA(S)	16
4.	STABLES	16
5.	SAFETY CUPS.....	16
6.	TIMING DEVICE	16
7.	SCORING/TIMING PROVIDER.....	17
8.	OTHER TECHNOLOGY/SERVICE PROVIDER(S)	17
9.	PRIZE GIVING CEREMONY	17
10.	ADVERTISING ON ATHLETES AND HORSES.....	17
11.	TICKETING.....	17
12.	BETTING.....	17
13.	TRANSPORT REIMBURSEMENT HORSES / PONIES	18
14.	WELCOME.....	18
15.	LOCAL TRANSPORTATION - ARRANGEMENTS FROM HOTEL TO SHOWGROUNDS	18
16.	ENTRY RIGHT TO SHOWGROUNDS/ACCREDITED PERSONS.....	18
17.	SUSTAINABILITY.....	18
XII.	VETERINARY MATTERS.....	19
1.	CUSTOMS FORMALITIES	19
2.	HEALTH REQUIREMENTS	19
3.	NATIONAL REQUIREMENTS	19
4.	PONIES.....	19
5.	INJURY SURVEILLANCE.....	19
6.	TRANSPORT OF HORSES.....	20
7.	VENUE ARRIVAL INFORMATION & FITNESS TO COMPETE	20
8.	EQUINE ANTI-DOPING AND CONTROLLED MEDICATION PROGRAMME (EADCMP). FEI VETERINARY REGULATIONS,	

CHAPTER VII	21
XIII. HUMAN ANTI-DOPING	22
XIV. ADDITIONAL INFORMATION	22
1. THE FEI POLICY FOR ENHANCED COMPETITION SAFETY DURING THE COVID-19 PANDEMIC.....	22
2. INSURANCES AND NATIONAL REQUIREMENTS.....	23
3. PROTESTS/APPEALS.....	24
4. SCHOOLING DURING COMPETITIONS.....	24
5. STEWARDING.....	24
6. DISPUTES	25
7. MODIFICATION TO SCHEDULE	25
8. ADDITIONAL INFORMATION FROM THE OC.....	25
9. PRIZE MONEY DISTRIBUTION.....	27
10. MAXIMUM NUMBER OF STARTERS PER COMPETITION	28
11. GLOSSARY	29
XV. ANNEXES.....	31

III. THE FEI CODE OF CONDUCT FOR THE WELFARE OF THE HORSE

The Fédération Equestre Internationale (FEI) expects all those involved in international equestrian sport to adhere to the FEI's Code of Conduct and to acknowledge and accept that at all times the welfare of the horse must be paramount and must never be subordinated to competitive or commercial influences.

1. At all stages during the preparation and training of competition horses, welfare must take precedence over all other demands. This includes good horse management, training methods, farriery and tack, and transportation.
2. Horses and Athletes must be fit, competent and in good health before they are allowed to compete. This encompasses medication use, surgical procedures that threaten welfare or safety, pregnancy in mares and the misuse of aids.
3. Events must not prejudice horse welfare. This involves paying careful attention to the competition areas, ground surfaces, weather conditions, stabling, site safety and fitness of the horse for onward travel after the event.
4. Every effort must be made to ensure that horses receive proper attention after they have competed and that they are treated humanely when their competition careers are over. This covers proper veterinary care, competition injuries, euthanasia and retirement.
5. The FEI urges all involved with the sport to attain the highest levels of education in their areas of expertise.

The Long version of this Code can be obtained from the Fédération Equestre Internationale, HM King Hussein I Building, Chemin de la Joliette 8, 1006 Lausanne, Switzerland. Telephone: +41 21 310 47 47. The Code is available in English. The Code is also available on the FEI's website: <http://inside.fei.org/>.

IV. GENERAL INFORMATION

1. ORGANISER

Name: LKS STRAGONA STRZEGOM
Address: MORAWA 36, 58-150 Strzegom POLAND
Telephone: 0048 748554042
Fax:
Email: office@stragona.pl
Website: www.StrzegomPonies.pl

Contact Details Show Ground:

Address: Morawa 36, 58-150 Strzegom
Telephone: 0048 748554042
GPS Coordinates: N50° 58' 14.187", E16° 23' 46.634"
Accessibility details (directions by road, nearest airport / train station):

By car: 14 km from Motorway A4 direction Strzegom

By plane: Airport Wrocław – 50 km from Main Arena (approx 40 min.)

By train: International Train Station Wrocław – 55 km from Main Arena

PLEASE NOTE: ALL riders are reminded that in Poland is in force "viaTOLL" system – electronic toll collection system.

More information on <http://www.viatoll.pl/en/home>

2. ORGANISING COMMITTEE

Honorary President:
President of the Event: Marcin Konarski
Show Secretary: Agnieszka Tymczyszyn
Press Officer: Agnieszka Chmieleńska
Technical Director: Mateusz Osicki

3. EVENT DIRECTOR

Name: Marta Wójcik
Address: Morawa 36, 58-150 Strzegom
Telephone: 0048 748554042
Mobile:
Fax:
Email: office@stragona.pl

4. STABLE MANAGER

Name: Małgorzata Siczyńska
Telephone: 0048 885 544 202
Email: office@stragona.pl

5. ANNOUNCER

Name: Błażej Dudzic (POL) / Zuzanna Ostańska (POL)
Email: office@stragona.pl

V. OFFICIALS

Ref.	Panel	Function	FEI ID	Name	NF	Lvl	E-mail & Mobile
1	Ground Jury	Ground Jury President	10080018	PATRICE ALVADO	FRA	3	palvado@wanadoo.fr
		Ground Jury Member	10049773	TOMASZ MOSSAKOWSKI	POL	3	tomasz.mossakowski52@gmail.com
		Ground Jury Member	10050206	JÓZEF ŚNIEŻEK	POL	3	jozef.sniezek@wroclaw-poludnie.pl
		Ground Jury Member	10134307	MAŁGORZATA MELON	POL	2	malgorzata.melon@gmail.com
		Ground Jury Member	10119851	JUSTYNA OLSZAK	POL	2	justyna.olszak@interia.pl
2	Foreign Judge	Foreign Judge	10080018	PATRICE ALVADO	FRA	3	palvado@wanadoo.fr
3	Foreign Technical Delegate	Foreign Technical Delegate	10049003	ECKHARD HILKER	GER	3	
4	Course Designer	Course Designer	10052103	SZYMON TARANT	POL	3	info@tarantevents.pl
		Assistant Course Designer		LUKASZ SZUSTOROWSKI	POL		lukasz@valde.pl
5	Chief Steward	Chief Steward	10093801	ORLA GRIFFIN	IRL	3	orlamvgriffin@gmail.com +353 87 9738936
6	Foreign Steward	Foreign Steward					*
7	Assistants Stewards	Assistant Steward	10059486	SONJA THEIS	GER	1	sonja.theis.loehnborg@web.de
		Assistant Steward	10114449	ROSSA GALLAGHER	IRL	3	justyna.olszak@interia.pl
		Assistant Steward	10052984	ZBIGNIEW SEIBT	POL	3	basia@interia.pl
		Assistant Steward	10102857	BARBARA SZYMCZAK	POL	2	szymczakwp@wp.pl
8	FEI Veterinary Delegate	FEI Veterinary Delegate					
	Veterinary Commission	Veterinary Commission President	10086688	LUKASZ GATKIEWICZ	POL	2	lukasz.gatkiewicz@evan-vet.pl
		Foreign Veterinary Delegate FEI appointment	10054447	KATARINA JOHANSSON	SWE	2	v9katjoh@hotmail.com
		Assistant FEI Delegate	10086690	MICHAŁ KORNASZEWSKI	POL		bonafidewet@gmail.com
9	Veterinary Service Manager (VR Art 1103) / Treating Veterinarian (VR Art 1105)	Veterinary Service Manager	10049846	JANUSZ OKONSKI	POL	3	jokon1@O2.pl
		FEI Permitted Treating Veterinarian	10007251	JULIA KORNASZEWSKA	POL		juliakornaszewskawet@gmail.com
10	Medical Doctor	Medical Doctor	10007531	PIOTR WOZNIAK	POL		office@stragona.pl
11	Farrier	Farrier	10235282	MIECZYSLAW KRYSZCZYNSKI	POL		office@stragona.pl
12	NF Delegate	NF Delegate (if applicable)					*

VI. INVITATIONS

1. GENERAL

Horses entered in one CSI star level may not enter another CSI star level at the same Event.

Horses may take part in national Competitions and international Competitions at the same Event only under the following conditions:

- Horses may take part in national Events up to two hours prior to the start of the international Event's Horse Inspection;
- If the national Event includes Competitions after the international Event ends, either on the same day or on the following day(s). Horses having taken part in the international Event may take part in national Competitions only, following the conclusion of the international Event.

Invitations

CH-EU-S P

NFs invited: **All European NFs affiliated to the FEI**

Number of NFs invited : All European NFs

Each NF may enter one team of not more than six Athletes and six Ponies from which five Athletes and five Ponies are allowed to travel to the Championship and four to start in the Team Final.

Number of ponies per athlete: 1 pony

An NF which cannot send a team may enter one (1) or two (2) individual Athletes with one (1) pony each.

Championships are open to Athletes from the beginning of the year in which they reach the age of 12 years until they end of the year they reach the age of 16 years.

Ponies must be at least 6 years old.

Athletes are invited by the Organiser through their National Federation.

One (1) groom per athlete.

Square for organiser/NF to include special provisions for restrictions related to Athlete/horse participation

VII. ENTRIES

IMPORTANT

- Entries must be made by NFs through the FEI Entry System for all categories of this Event (<https://invitation.fei.org/login>);
- Additional documentation can be found at: <https://inside.fei.org/fei/your-role/it-services/fei-entry-system/fei-entry-system-jumping>;
- All Athletes and Horses participating in any International Competition must be registered with the FEI;
- Athletes and/or Horses present at the Event without having been entered through the FEI's Online Entry System will be automatically disqualified unless compelling circumstances warrant otherwise.

Space for organiser to include details if necessary

1. ENTRY DATES AND ENTRY FEES

Entries have to be in accordance with Art.251 of the FEI Jumping Rules, 26th edition, updates effective 1 January 2021

Deadlines for Entries:

Nominated Entries: **12.07.2021**
(NB: Nominated Entries apply to Championships and Games **ONLY**)

Definite Entries: **06.08.2021**

Last date for substitutions: **10.08.2021 (1 hour prior to the horse inspection)**

Entry fee per horse (per category):

VAT excluded

Entry fee per horse:	540 EUR (VAT included)
-----------------------------	-------------------------------

VAT (in %) : **8%**

Please refer to definition of Entry fees and Compulsory fees in the Glossary of the FEI Jumping Rules 26th edition, updates effective 1 January 2021, that is copied in Section XIV point 10.

Compulsory fees per horse:

- EADCMP Fee: Included in entry fee ☐
Not included in entry fee ☒
Lower Level Events (CIMs) CHF 18 per horse per event
Higher Level Events CHF 25 per horse per event
(For definition of CIMs see Appendix E of the FEI General Regulations, all other events not defined as CIMs)
- Fee for manure disposal (at OC discretion; maximum € 40 per horse per Event).
40€

- Fee for health/customs-related documents for Horses, if applicable (only if requested) **25€ Per horse**

All aforementioned amounts are including VAT

Total maximum fee per horse:

65€ + EADCMP Fee

Compulsory fees per athlete:

- NF fee if applicable Per athlete
- NF medication control programme fee if applicable Per athlete
- Fee for lorry parking if applicable 100€ Per lorry/caravan
- Fee for electric hook-up for lorry

All aforementioned amounts are including VAT

Total maximum fee per Athlete:

100€

All Entry fee should be paid by bank transfer on the date on Nominated entries:

OC details: LKS STRAGONA, Morawa 36, 58-150 Strzegom
Santander Bank Polska /Strzegom
IBAN: PL 42 1090 2343 0000 0001 0499 6685
Swift code: WBK PPLPP

2. OTHER FEES

All other fees must optional fees and be listed hereunder with the details of the amounts to be charged and approved by the FEI. Only fees approved by the FEI and listed in the approved Schedule can be charged by the OC. *Please specify if price per bale or other quantity.*

Hay: 5€

Straw: daily price/first bedding free of charge/

Shavings: daily price/first bedding not included in entry fee/

Other (please specify): **As stabling is limited, boxes for extra ponies can only be provided if booked with the Organising Committee before 12.07.2021. Cost for an extra box 150 EUR.**

All aforementioned amounts are including VAT

VAT number of the organiser:

PL 884-22-76-847

3. NO-SHOWS/LATE WITHDRAWALS

NB: In the case of withdrawals after the date of definite entries or no-shows the athlete or the respective NF will be held liable to reimburse the OC for the actual financial loss incurred by the OC (i.e. stabling and hotel expenses) as a result of the late withdrawal or no-show.

Amount charged:

<p style="text-align: center;">Withdrawal: Before 12/07/2021 - 100% refund Before Last date for substitution – Stabling fee can be invoiced After Last substitution date Entry fee can be invoiced</p>
--

VIII. TIMETABLE

Competitions must not start before 08:00 and must not finish after 23:00, unless prior approval is granted by the FEI.

As per Jumping Rules Annex VI: combined competitions are not permitted.

The scheduling of competitions must take into account mandatory maintenance breaks as follows. In principle, there should be one maintenance break for every 40 starters; at a minimum, it is compulsory to include one maintenance break in competitions with 50-99 starters after half of the starters have competed. Competitions with 100 starters or more must have three maintenance breaks. The start list must indicate when the maintenance break will take place (e.g. after N° 25).

(to be provided per category/level if multiple events)	Day	Date	Time
• Opening of stables	Monday	09.08.2021	08:00-15:00
• Opening Ceremony & The Nations Evening	Tuesday	10.08.2021	19.00
• Pony Measuring & Horse Inspection <i>All horses taking part at this Event must be present during the first horse inspection, unless unable to do so due to "force majeure"</i>	Wednesday	11.08.2021	09:00
• Horse Re-Inspection	Thursday	12.08.2021	07:00
• Horse Inspection	Saturday	14.08.2021	Afternoon
• Opening times of exercise areas			
• Chefs d'Equipes Meeting at CSIO's (FEI Jumping Rules article 253)	Monday	09.08.2021	18.30

Competitions CSI:	Day	Date	Time	Art
• Declaration of Starters				////////
• Jumping Training Session	Wednesday	11.08.2021	14:00	
• Jumping Individual Qualifier	Thursday	12.08.2021	8:00	238.2.1
• Jumping Team Competition	Friday	13.08.2021	13:30	(Art. 264) Annex XI, Art. 16.3.2, Annex XI, Art. 16.15 + Art. 22.6.3 + 16.6 + 16.7 + 22.13
• Jumping Individual Consolation	Saturday	14.08.2021	10:00	238.2.2
• Jumping Individual Final	Sunday	15.08.2021	13:30	Chapter III, Annex XI, Art. 16.3.3, 16.6, 16.7/ Annex XI, Art. 22.14, Art. 22.6.5
• Prizes in Kind	Trophies, sashes, stable plaques and rosettes			

Overall Prize Money: Prizes in Kind

Applicable government tax to be deducted from Prize Money (see also XIV.8): _____%

GENERAL CLASSIFICATION AT THE END OF THE COMPETITIONS:

Leading athlete award –	(Prize description and value)
Best foreign athlete –	(Prize description and value)
Best home athlete –	(Prize description and value)
Team awards –	(Prize description and value)

PRIZE – CLASSIFICATION:

IX. COMPETITION DETAIL

Wednesday

DATE: 11.08.2021

Training Session Time: 14:00

Jumping Training Session Time 14:00, 90 seconds per pony/ an agreed length of time per team as per Chef d'Equipe meeting. Boots, breeches, shirts, jackets and hats must be worn.

1.25m maximum height, 1.40m maximum spread. Open to all CH-EU athletes

FIRST DAY : Thursday

DATE: 12.08.2021

COMPETITION No: 1

Time: 08:00

Type of Competition: Table A, Against the Clock

Acc. to Article: 238.2.1, Annex XI, Art. 16.3.2 + Art. 22.6.2 + 16.6 + 16.7

Competition description:

First Competition for Teams and Individuals. Open to all Athletes. This is a table A competition against the clock without a jump off in the event of equality for the first place (see JRs Art. 238.2.1). If an Athlete has been eliminated or retires, he shall be penalised with 20 Penalties more than the Athlete with the highest number of Penalties. If the Athlete concerned has himself received the highest number of Penalties before being eliminated or retiring, 20 penalties will be added to his score.

Jump-off (if any)	NO
Speed/Fixed time	350m/min.
Height of obstacles:	max. 1,30m
Number of horses per athlete	1
Number of Starters:	100* (if more than 100 take part then please refer to
Section XIV point 9)	
Total prize money:	
Chart to be used:	1 (25% to winner) <input type="checkbox"/>
	2 (33% to winner) <input type="checkbox"/>

Please specify prize money amount for each athlete placed 13th and beyond:

Starting Order: Drawn on Wednesday during Chef d'Equipes meeting according to JRs Art. 252

The Chefs d'Equipe must declare the composition of their team (four Athletes/Ponies) to the OC in writing, before 18.00 hours, on the day preceding the second Competition.

22.7.1

This competition is open to the 5th athlete per team (art 22.7.1)

Prizes in kind – Rosettes, Plaques, etc.

SECOND DAY : Friday

DATE: 13.08.2021

COMPETITION No: 2

Time: 13:30

Type of Competition: Two identical rounds with Jump-Off

Acc. to Article: (Art. 264) Annex XI, Art. 16.3.2, Annex XI, Art. 16.4 5 + Art. 22.6.3
+ 16.6 + 16.7 + 22.13

Competition description:

Second Competition (Team Final, Second Individual). This Competition is run over two rounds, identical or different, with the same degree of difficulty in the second round, according to Table A not against the clock with a jump-off against the clock in case of equality for first, second and/or third place.

This Competition is open only to Athletes and Ponies which have taken part in the first qualifying Competition, the team classification only affecting the members of the teams who have declared to start.

Starting order in the Second Competition will be according to a draw in the first round, conducted according to JRs Art. 252.

In the second round the order of starting will be according to the reverse order of total Penalties incurred by the best three Athletes per nation in the first Competition and by the best three Athletes per team in the first round of the Team Final.

In the case of individuals or teams with equal Penalties, the same starting order will be retained as in the first round. The starting order in the possible jump-off will revert to the starting order in the second round. If two jump-offs are required, the jump-off for the third place shall precede the jump-off for the second and first places.

The second round is open only to the ten best teams following the first Competition and the first round of the Team Final and those teams tied for 10th place.

In the second round individual Athletes will start before the teams. Before the ten best placed teams and those tied for 10th place begin their second round, all individuals and team members not qualified for the second round may take part in a second round qualifier for the third Competition. There must be a break of at least 30 minutes between the second round qualifier and the second round of the Team Competition.

Jump-off (if any)	If equality for the 1st, 2nd or 3rd place
Speed/Fixed time	350m/min.
Height of obstacles:	max. 1,30m
Number of horses per athlete	1
Number of Starters:	100* (if more than 100 take part then please refer to
Section XIV point 9)	
Total prize money:	
Chart to be used:	1 (25% to winner) <input type="checkbox"/>
	2 (33% to winner) <input type="checkbox"/>

Please specify prize money amount for each athlete placed 13th and beyond:

The team classification is decided by adding the Penalties incurred by the best three Athletes of each nation in the first Competition and in each of the two rounds of the Team Final. For those teams not qualified for the second round the results of the best three Athletes per team in the first round of the Team Final count.

Team Athletes not completing the first or second round receive 20 Penalties more than the worst placed team Athlete who has finished that particular round.

In the case of equality of Penalties between the teams for first, second and/or third place, a jump-off against the clock is compulsory in which all team Athletes participate. If two jump-offs are required, the jump-off for the third place shall precede the jump-off for the first and second place. The classification in this jump-off is obtained by adding the Penalties and the times incurred by the best three Athletes in each team. In case of further equality of Penalties and time, the teams will be placed equal.

In case of equality of Penalties for any other placing, the teams will be placed equal.

In addition to the team classification there will be an individual classification with prizes for this Competition.

Prizes – Teams

FEI Gold Medal to the winning team

FEI Silver Medal to the second placed team

FEI Bronze Medal to the third placed team

Prizes in kind, trophies, sashes, stable plaques and rosettes to all teams taking part in the second round.

Prizes – Individual

Prizes in kind, trophies, stable plaques and rosettes for 25% starters.

THIRD DAY : Saturday

DATE: 14.08.2021

COMPETITION No: 3

Time: 10.00

Type of Competition: Table A against the clock with a jump-off
Acc. to Article: (Art. 238.2.2.) Art.22.6.4, Annex XI, Art. 16.3.1.
Competition description: Individual (CH-EU), Farewell Competition

Jump-off (if any) Yes
Speed/Fixed time 350m/min.
Height of obstacles: 1,25m
Number of horses per athlete 1
Number of Starters: 100* (if more than 100 take part then please refer to
Section XIV point 9)
Total prize money:
Chart to be used: 1 (25% to winner) ☐
2 (33% to winner) ☐

Please specify prize money amount for each athlete placed 13th and beyond:

Starting Order: Drawn by computer system on Friday.
Prizes in kind, stable plaques and rosettes.

Horse Inspection

Time: Afternoon

Horse inspection one day prior the individual final.

FOURTH DAY : Sunday

DATE: 15.08.2021

COMPETITION No: 4

Time: 13.30

Type of Competition: This Competition consists of two different rounds A and B each judged under Table A not against the clock
Acc. to Article: Chapter III, Annex XI, Art. 16.3.3, 16.6, 16.7 / Annex XI, Art.22.14, Art. 22.6.5

Competition description:
Individual Final

Qualified to participate are the top 60% of the Athletes (including those placed equal for last place) according to the cumulative Penalties over the first and the second Competitions. The number of Athletes permitted to participate must not be less than 15 and not more than 30. However, all Athletes with equal Penalties for the last qualification place are allowed to participate in the Individual Final even if the number of starters would then be more than 30.

They must have taken part in the first Competition (completed or not) and have completed the second Competition (without having been eliminated or without retiring). If, for any reason, one or more of the qualified Athletes are unable to start, they will not be replaced by followers.

All Athletes who complete Round A go forward to Round B. The Penalties in the two rounds are added.

The Athletes will be invited to inspect the course of Round B.

Jump-off (if any) Yes, for the 1st, 2nd and 3rd placings
Speed/Fixed time 350m/min.
Height of obstacles: 1,35m
Number of horses per athlete 1

Number of Starters: 100* (if more than 100 take part then please refer to
Section XIV point 9)
Total prize money:
Chart to be used: 1 (25% to winner) ☐
2 (33% to winner) ☐

Please specify prize money amount for each athlete placed 13th and beyond:

Starting Order: The starting order for Round A will follow the reverse order of Penalties incurred in the first and second Competitions of the Championship. In the event of equality of Penalties for any placing, the result of the first Competition will be the deciding factor for the starting order. The lowest placed qualified Athlete will therefore start first.

The starting order for Round B will follow the reverse order of the Penalties incurred in the first and second Competitions as well as Round A. The Athlete with the greatest number of Penalties will start first, the Athlete with the least Penalties will start last. In the event of Athletes with equal Penalties, the result of the first Competition will be the deciding factor for the starting order.

CLASSIFICATION:

Individual Classification

The individual placing is determined for each Athlete by adding the Penalties incurred in the first qualifying Competition, both rounds in the second qualifying Competition (disregarding the Penalties incurred in the jump-off, if any) and in rounds A and B of the third Competition (Individual Final).

In case of equality of Penalties for the first, second and/or third place a jump-off, against the clock, is compulsory. If two jump-offs are required, the jump-off for the third place shall precede the jump-off for the first and second place. In case of further equality of Penalties and time, the Athletes will be placed equal.

Two classifications for the Individual Final Competition must be provided; one for the individual Medal winners and another for all Athletes taking part in this Competition. For the latter classification only the results from Rounds A and B count. Athletes with equality of Penalties are placed equal.

FEI-Gold Medal to the winning Athlete

FEI-Silver Medal to the second placed Athlete.

FEI-Bronze Medal to the third placed Athlete.

Prizes in kind, trophies, sashes, stable plaques and rosettes to the placed athletes, according to the results in rounds A & B

Prizes in kind, stable plaques and rosettes.

X. FACILITIES OFFERED

1. ATHLETES

Accommodation

Hotel:

Address:

Telephone:

At the expense of: The Organiser ☐ or Athletes ☒

Accommodated (bed and breakfast) from to

Meals

At the expense of: The Organiser ☐ or Athletes ☒

Meals provided from 11.08.2021 to 15.08.2021.

THE OC will provide Lunch for Athlete and Chefs d'Equipes in the Restaurant on Main Arena from 11.08.2021 to 15.08.2021 at OC expense.

2. GROOMS

Accommodation.

Requests for accommodation must be sent with entries.

At the expense of: The Organiser ☐ or Athletes ☒

Accommodated (bed and breakfast) from to

Meals.

At the expense of: The Organiser ☐ or Athletes ☒

Meals provided from to .

Space for organiser to include details if necessary

NB: If applicable, Organiser must provide proper sanitary conditions. The showering facilities should be sufficient for both male and female grooms with hot and cold water. Shower facilities as well as restrooms should at all times be in a state of cleanliness.

XI. LOGISTICAL/ADMINISTRATIVE/TECHNICAL INFORMATION

1. DRAW

List of Draws, time, date and location:

- Chef d'Equipes Meeting – Monday 09/08/2021 at 18:30 in OFFICIALS TENT
- Draw of the Nations order – Tuesday 10/08/2021 at 16:30 in OFFICIALS TENT
- Competition 1. CH-EU Jumping Individual Draw – Wednesday 11/08/2021 at 16.00 in OFFICIALS TENT
- Competition 2. CH-EU Jumping Individual Draw - Thursday 12/08/2021 at 16:00 in OFFICIALS TENT. A draw will first take place to determine the order of starting of the individual Athletes entered in addition to teams, regardless of their nationality. The order in which the NFs (teams) will start is according to the draw of the Nations, which takes place on Tuesday 10/08/2021.
- On Thursday 12/08/2021 until 16:00 in STABLE OFFICE each Chef d'Equipe will then fix the order in which he wishes his team Athletes to start in the order of the NFs. These Athletes will be inserted in sequence in the remaining spaces between the individual Athletes.
- Competition 3. (Farewell) Declaration on the day prior to competition before 18:00 in the jumping secretaries. The draw will be done by computer system on Friday 13/08/2021.

2. COMPETITION ARENA(S)

Dimensions:	90m x 60m
Type of Footing:	Sand – all weather

3. PRACTICE ARENA(S)

Dimensions:	65m x 25m
Type of Footing:	Sand – all weather
Additional practice areas:	100x40m - Sand

Riders must have the possibility to exercise their horses in an exercise area under a Steward's supervision at least 30 minutes per day outside of the competition warm-up period. Details of opening times of exercise areas must be included in the timetable.

4. STABLES

Size of boxes	3m x 3m (minimum 3m x 3m+20% 3m x 4m)
---------------	---------------------------------------

Space for organiser to include details if necessary

5. SAFETY CUPS

Name of Manufacturer:	Caro
-----------------------	------

6. TIMING DEVICE

Name of Manufacturer:	Tag Heur
Model:	CP 545, HLS - RX
FEI Report number:	22010028A, 2016004B

7. SCORING/TIMING PROVIDER

Will you use a FEI Certified Service Provider to manage the scoring and timing at your Event?

(The list of certified Service Providers is available here: <https://inside.fei.org/fei/your-role/it-services/it-providers/list>)

No ☒

Name of the company: Tarant Events

Contact person at Event

Name: Agnieszka Tarant

FEI ID number: 10139344

Contact email: agnieszkatarant@gmail.com

Please fill in Annex XV – FEI Entry System for the Timing Provider

The FEI may require to be provided with real time results data feed of your Events according to FEI requirements; in this case you and your provider will be informed accordingly.

8. OTHER TECHNOLOGY/SERVICE PROVIDER(S)

Will you use other technology/service provider(s) at your event?

No ☒

9. PRIZE GIVING CEREMONY

The owner of the winning horse/pony must be invited to the prize giving ceremony for the Grand Prix, if present at the event.

The number of athletes required to present themselves for the prize-giving ceremony of each competition is 10.

All Prize Giving Ceremonies must strictly follow the Covid-19 guidelines for Prize giving protocols and media activities.

10. ADVERTISING ON ATHLETES AND HORSES

At CSI events, and all competitions except for the Nations Cup, athletes are authorised to carry the logo of their personal sponsor in accordance with the articles 256.3 and 257.3 of the FEI Jumping Rules.

The Chief Steward will check that the advertising on athletes and horses complies with these Articles.

11. TICKETING

Are you selling tickets for spectators to attend your event: Yes ☐ No ☒

Name of your ticketing provider:

Web address to buy ticket:

12. BETTING

Betting will be authorised by the Organiser: Yes ☐ No ☒

13. TRANSPORT REIMBURSEMENT HORSES / PONIES

Transport expenses to be paid by:
The Organiser ☐ at _____ per km.
The Athlete ☒

14. WELCOME

The time and date of arrival of athletes, horses and their means of transport must be given to the Organiser in order to facilitate their arrival.

15. LOCAL TRANSPORTATION - ARRANGEMENTS FROM HOTEL TO SHOWGROUNDS

Walking distance ☒

Organiser Shuttle Service ☐
Public Transport ☐ to be paid by the Organiser ☐ / the Athlete ☒
If paid by Athlete approximate cost per round trip: 10-15 Eur
Other:

16. ENTRY RIGHT TO SHOWGROUNDS/ACCREDITED PERSONS

Entry right to the stable area according to FEI Veterinary Regulations Articles 1008-1009.

NUMBER OF ACCREDITED PERSONS:

Athlete: 1
Partner: 1
Groom: 1
Horse Owner: two (2) accreditations per horse acc. to FEI-Passport

17. SUSTAINABILITY

Please consider the environment when organising an FEI Event. Please find useful information on FEI Sustainability here: <http://inside.fei.org/fei/your-role/organisers/handbook>

XII. VETERINARY MATTERS

1. CUSTOMS FORMALITIES

Contact details for Customs Formalities:

Name:

Address:

Telephone:

Fax:

Email:

Opening hours:

Space for organiser to include details if necessary

2. HEALTH REQUIREMENTS

GENERAL

In accordance with the FEI Code of Conduct for the Welfare of the Horse it is imperative that all Horses at FEI Events are physically fit and free from infectious disease before being allowed to compete.

ENTRY OF HORSES

Required health tests and vaccinations:

Quarantine period:

Specimen Import Licence applied:

For questions or problems, please contact your Government Veterinary Services.

Space for organiser to include details if necessary

3. NATIONAL REQUIREMENTS

If applicable please provide:

Space for organiser to include details if necessary

4. PONIES

FEI Veterinary Regulations, Chapter IX and Annex IX:

For all Pony Events, Ponies must be available for Pony Measurement if requested by the FEI.

5. INJURY SURVEILLANCE

FEI Veterinary Regulations, Chapter VIII:

Horses participating in FEI Events are subject to injury surveillance protocols; and in the event of fatality, a post mortem examination.

6. TRANSPORT OF HORSES

Horses must be fit to travel and be transported in suitable vehicles for the transport of horses. Any government requirements for disease testing and control must be requested well in advance, to ensure that the horse is in compliance by the time of arrival at the border of the country where the Event is taking place. Athletes, or their representatives, have the responsibility to comply with national legislation in both their country of origin and the host nation of the Event. Where necessary athletes must contact local government authorities or veterinary advisors for information regarding animal health requirements and transport legislation. Within the European Union (EU), this includes EU Council Regulation (EC) No 1/2005 concerning the protection of animals during transport within the Member States of the EU.

7. VENUE ARRIVAL INFORMATION & FITNESS TO COMPETE

7.1. PASSPORTS. FEI General Regulations Article 137

For all issues relating to FEI Horse Passports/FEI Recognition Cards please contact your National Federation.

All Horses competing at FEI Events must be registered with the FEI.

FEI Passports or FEI Recognition Cards (for those Horses with a national passport approved by the FEI) are compulsory for FEI Events.

NB: Horses entered in CIMs and in CSIP in their country of residence are not required to have an FEI Passport or FEI Recognition Card but must be properly registered with the FEI and identifiable (GRs 137.2).

Athletes who do not present a Horse's Passport and/or Recognition Card, or one that is not correctly validated or fail to meet other passport requirements will be **subject to Sanctions in accordance with Annex VI of the FEI Veterinary Regulations** and may not be allowed to compete.

NB for Horses permanently resident in a Member State of the European Union: all Horses must have a national EU passport in compliance with EU Regulations to which a FEI Recognition card is applied. The exception to this being Horses in possession of an FEI passport which has been continually revalidated without interruption.

7.2. VACCINATIONS - EQUINE INFLUENZA. FEI Veterinary Regulations Article 1003

Horses competing at FEI Events must comply with the requirements for Equine Influenza vaccination in accordance with the Veterinary Regulations and as summarised below.

VACCINATION	PROTOCOL	ELIGIBILITY TO ENTER VENUE
Primary Course	1 st Vaccination: day 0 2 nd Vaccination: day 21-92	May compete 7 days after the 2 nd Vaccination
First Booster	Within 7 months of the 2 nd vaccination of the Primary Course	May compete for 6 months +21 days after the 2 nd vaccination of the Primary Course Must not compete in the 7 days after receiving a vaccination
Boosters	MINIMUM: within one year of previous booster vaccination IF COMPETING: must be in	Must have been vaccinated within 6 months +21 days before arriving at the Event

	the 6 months +21 days of the booster previous vaccination	Must not compete in the 7 days after receiving a vaccination
--	---	--

All FEI registered Horses intending to compete at FEI Events (including CIMs) must be vaccinated against Equine Influenza in accordance with these VRs. The exception being if the applicable domestic legislation prevents the use of Equine Influenza vaccines within the relevant territory

7.3. EXAMINATION ON ARRIVAL. FEI Veterinary Regulations Article 1031

On arrival at an Event venue, all Horses must undergo an examination by a veterinarian to confirm their identification from their passport and micro-chip ID (where present), their vaccination status and general health. To protect all horses attending events, any Horse with a questionable health status concerning vaccination, disease or other concerns, must be stabled within the isolation facilities provided by the Organising Committee pending a decision on entering the venue.

7.4. HORSE INSPECTIONS. FEI Veterinary Regulations Articles 1034-1042

All Horses will be assessed for their fitness to compete during the Horse Inspection. Any Horse demonstrating questionable fitness may be referred to the Holding Box for further veterinary examination. Horses not deemed fit to compete by the Inspection Panel will not be permitted to compete.

7.5. LIMB SENSITIVITY EXAMINATION. FEI Veterinary Regulations Articles 1048-1053

All Horses are subject to examination under the protocol for abnormal limb sensitivity throughout the period of an Event. For Jumping that includes, but is not limited to, between rounds and before the Jump Off. Horses may be examined once or on multiple occasions during the Period of an Event.

Horses may be selected for examination under the protocol randomly or they may be targeted. All Horses selected to be tested must submit promptly to the examination or are subject to immediate disqualification. There is no obligation to examine any specific number of Horses at an Event.

8. EQUINE ANTI-DOPING AND CONTROLLED MEDICATION PROGRAMME (EADCMP). FEI VETERINARY REGULATIONS, CHAPTER VII

8.1. SAMPLING. FEI VETERINARY REGULATIONS Chapter VII

All horses competing at FEI Events may be subject to sampling for the presence of Prohibited Substances in accordance with the Anti-Doping and Controlled Medication Regulations (EADCMRs). Horses may be selected for sampling in accordance with obligatory testing, targeted or random sampling procedures. Refer to FEI Financial Charges for details of fees relating to Equine and Human Anti-Doping program (EADCMP), which OCs/NFs have the right to charge to the athlete (applicable for all FEI events worldwide).

8.2. ELECTIVE TESTING. FEI VETERINARY REGULATIONS ARTICLES 1058

Elective Testing may be carried out prior to an Event to check for the presence of Prohibited Substances. Please refer to <https://inside.fei.org/fei/cleansport/horses> for information and details.

XIII. HUMAN ANTI-DOPING

Athletes can be tested at any FEI Event, by the FEI or by other Anti-Doping Organisations with Testing jurisdiction. Organisers will have the responsibility to provide facilities and staff/volunteers to facilitate such Testing if requested by the FEI as outlined in article 22.3 of the FEI's Anti-doping Rules for Human Athletes (ADRHA).

The ADRHA rules are published on the FEI website at <http://inside.fei.org/content/anti-doping-rules>.

XIV. ADDITIONAL INFORMATION

1. THE FEI POLICY FOR ENHANCED COMPETITION SAFETY DURING THE COVID-19 PANDEMIC

The FEI Policy for Enhanced Competition Safety during the Covid-19 Pandemic ("Policy") (<https://inside.fei.org/system/files/FEI%20Policy%20for%20Enhanced%20Competition%20Safety%20during%20the%20Covid-19%20Pandemic%20-%20Effective%201%20July%202020%20-%20Updated%2012%20October%202020.pdf>) is mandatory and applies for any FEI Event taking place **as of 1 July 2020**. The Policy has been developed based on currently accepted best practices by the WHO and US Center for Disease Control (CDC) and will be continually reviewed and updated as more information becomes available. It is not intended to replace the applicable guidance and policies from domestic government and health authorities, but to supplement their recommendations with sport specific considerations.

The OC shall submit the risk assessment and mitigation plan (including name and contact details of the person in charge) to the FEI as an annex to the Event Schedule, **at the latest ten (10) working days before the event's deadline for Definite Entries**.

Events for which the FEI has not received the documented risk assessment and mitigation measures plan in accordance with article 2.1.g) of the Policy **will be removed from the FEI calendar** in accordance with Article 112.3 of the FEI General Regulations.

ASSUMPTION OF RISK / WAIVER OF LIABILITY

In consideration of being allowed to participate in the Event and related activities, all Participants (as defined in the Policy) acknowledge, appreciate, and agree that:

1. Participation includes possible exposure to and illness from infectious diseases including but not limited to COVID-19. While particular rules and personal discipline may reduce this risk, the risk of serious illness and death does exist; and,
2. The Participants knowingly and freely assume all such risks, both known and unknown, even if arising from the negligence of the OC or others, and assume full responsibility for their participation; and,
3. The Participants willingly agree to comply with the stated and customary terms and conditions for participation as regards protection against infectious diseases. If, however, a Participant observes any unusual or significant hazard during his/her presence or participation, the Participant will remove himself/herself from participation and bring such to the attention of the nearest official immediately; and,
4. The Participants, for themselves and on behalf of their heirs, assigns, personal representatives and next of kin, HEREBY RELEASE AND HOLD HARMLESS THE OC AND THE FEI, their officers, officials, agents, and/or employees, other participants,

sponsoring agencies, sponsors, advertisers, and if applicable, owners and lessors of premises used to conduct the event ("RELEASEES"), WITH RESPECT TO ANY AND ALL ILLNESS, DISABILITY, DEATH, or loss or damage to person or property, WHETHER ARISING FROM THE NEGLIGENCE OF RELEASEES OR OTHERWISE, to the fullest extent permitted by law.

The Participants confirm to have read this release of liability and assumption of risk agreement, fully understand its terms, understand that they have given up substantial rights.

2. INSURANCES AND NATIONAL REQUIREMENTS

Equestrian sports involve inherent dangerous risks. To the greatest extent permitted by law, the FEI and the FEI Event Organiser shall NOT be liable for any damages relating to loss of property or injury of any kind to Athletes, Owners, Support Personnel or Horses at or in connection with an FEI Event and the FEI expressly excludes all such liability.

2.1. ATHLETES, OWNERS AND SUPPORT PERSONNEL

2.1.1. Personal Accident and Health Insurance

It is your responsibility as an Athlete/Owner/ Support Personnel to ensure that you have adequate personal accident insurance in place to cover your participation at FEI Events and in particular to insure against any personal injury or medical expenses arising from an accident, injury or illness which may occur at a FEI Event.

You should check with your National Federation to confirm if your National Federation's insurance policy (if any) covers personal accidents and/or illnesses which may occur when you are attending/participating in FEI Events.

If your National Federation does not have a personal accident/health insurance policy or if the National Federation's insurance policy does not cover personal accident or health claims, then you should obtain your own personal accident and health insurance policy to cover your attendance/participation at FEI Events.

2.1.2. Personal Property Insurance

You should also ensure that you are insured against property loss, theft or damage which may occur at an FEI Event.

Again, the advice is to check with your National Federation to confirm if they have an insurance policy in place which would cover you in case of such property loss, theft or damage. If not, then you should obtain your own personal property insurance to cover such situations.

2.1.3. Press Equipment

Press equipment and other items left in the Press workroom, Press lockers, the Press Tribune or anywhere on the showgrounds are left entirely at the owner's risk. The Organising Committee does not accept any responsibility for any loss or damage to such equipment or items. Members of the Press are advised not to leave any equipment or personal items unattended.

2.2. ATHLETES AND OWNERS

2.2.1. Third Party Liability Insurance

As an Athlete/Owner you are personally responsible for damages to third parties caused by you, your employees, Support Personnel, your agents or your Horses. You are, therefore,

strongly advised to take out third-party liability insurance providing full coverage in relation to FEI Events at home and abroad, and to keep the policy up to date.

The FEI and the Organiser will NOT be responsible for any damage caused to third parties by you, your employees, Support Personnel, your agents or your Horses.

2.2.2. Additional Liability Information

Space for organiser to include reference to National Laws when necessary

2.2.3. Horse Insurance

As an Owner you should ensure that your Horses are adequately insured against any injuries or illnesses they may sustain while participating at a FEI Event.

Space for organiser to include reference to National Laws when necessary

3. PROTESTS/APPEALS

To be valid, all Protests and Appeals must be made in writing and accompanied by a deposit of CHF 150.- or equivalent.

Protest and appeal forms are available on the FEI website:

Protests: <http://inside.fei.org/sites/default/files/FEI%20Protest%20Form.pdf>

Appeals: <http://inside.fei.org/sites/default/files/FEI%20Appeal%20Form.pdf>

4. SCHOOLING DURING COMPETITIONS

Athletes wishing to school during speed competitions (Table A and Table C) must inform the OC before these competitions begin. These athletes will start first in these competitions.

5. STEWARDING

- If an athlete is uncertain as to whether the boots he/she intends to use during an event are allowed, he/she or his/her representative should show the boots to the Chief Steward for his/her opinion before the boots are used in training or in competition.
- In addition, athletes are to be made aware that hind boots must be removed and placed again on the horse's legs in the presence of a Steward while in the warm-up arena prior to entering the competition arena for certain competitions. (If bandages are used in place of boots, athletes are not required to remove the bandages in the warm-up arena.) This procedure is compulsory for competitions for which boot and bandage control is mandatory, that is the Nations Cup, Grand Prix, and the competition with the highest prize money, and is at the discretion of the Chief Steward for other competitions.
- As an alternative to carrying out this procedure at the time designated by the Steward an athlete may ask his/her groom to take the boots to the in-gate and place them on the horse's legs in front of the Steward prior to the combination entering the arena.

- The Steward has the authority to intervene if a boot is deemed excessively tight by instructing that the boot be removed and put on again correctly. *[Stewards are to note that it is normal for a horse's gait to be somewhat affected immediately after boots have been removed and re-placed.]* If an athlete or his/her groom refuses to remove and re-place the boot(s) when instructed to do so by the Steward, a Yellow Warning Card will be issued to the athlete in question.
- If it is deemed impossible or unsafe to remove the hind boots in the warm-up arena prior to the combination entering the competition arena, due to an extremely excited or nervous horse, the boots of the horse in question are to be removed by the athlete/groom following the athlete's round upon leaving the arena and inspected by the Steward. This inspection may be carried out during the boot and bandage control if the boot and bandage control is carried out for the competition in question.
- This procedure does not replace boot and bandage control after completion of an athlete's round for competitions for which boot and bandage control is mandatory (refer to JRs Art. 244.1).

6. DISPUTES

In the event of any discussion concerning the interpretation of the schedule (in translated languages), the English version will be decisive.

7. MODIFICATION TO SCHEDULE

In exceptional circumstances, together with the approval of Chefs d'Equipe, host NF delegate, if any, and the Ground Jury, the Organiser may change the schedule in order to clarify any matter arising from an omission or due to unforeseen circumstances. Any such changes must be notified to all athletes and officials as soon as possible and they must be reported to the FEI Secretary General by the Technical Delegate, the President of the Ground Jury or the Foreign Judge, as applicable.

8. ADDITIONAL INFORMATION FROM THE OC

Space for organiser to include any additional information

FEI APPROVED SCHEDULE

CH-EU-P Strzegom 11-15 August 2021



Age of Athletes and Horses according to the Event's Category

Event's Category	Age of Athletes (Refer to JRs 255)	Age of Horses
Olympic Games/WEG	As of 18 th year	Min 9 y.o.
Continental Championships Senior	As of 18 th year	Min 8 y.o.
Regional Championships/Games	As of 18 th year As of 16 th year if height of obstacles max. 1.40m (JRs Annex IX, Art. 6.1)	Min. 8 y.o. Min. 7 y.o. if height of obstacles max. 1.40m (JRs Art. 254.1.1)
World Cup Final	As of 18 th year	Min. 9 y.o.
Nations Cup Final	As of 18 th year	Min. 8 y.o.
CSI-W3*-5*/CSIO3*-5*/CSI3*-5* Grand Prix, World Cup, Nations Cup, Power and Skill, Derby or Competition with the highest prize money Other Competitions Other Competitions if height max. 1.40m Other Competitions if height max. 1.30m	As of 18 th year As of 16 th year As of 14 th year As of 12 th year	Min. 7 y.o.
CSIO1*-2*/CSIO-W1*-2* Grand Prix, World Cup, Nations Cup, Power and Skill, Derby or Competition with the highest prize money Other Competitions Other Competitions if height max. 1.40m Other Competitions if height max. 1.30m	As of 18 th year As of 16 th year As of 14 th year As of 12 th year	Min. 6 y.o. *
CSI-W2*/CSI2* World Cup, Power and Skill, Derby Grand Prix, if not the World Cup Competition, and other Competitions Grand Prix, if not the World Cup Competition, and other Competitions if height max. 1.40m Grand Prix, if not the World Cup Competition, and other Competitions if height max. 1.30m	As of 18 th year As of 16 th year As of 14 th year As of 12 th year	Min. 6 y.o.
CSI-W1*/CSI1* World Cup, Power and Skill, Derby Grand Prix, if not the World Cup Competition, and other Competitions Grand Prix, if not the World Cup Competition, and other Competitions if height max. 1.30m	As of 18 th year As of 14 th year As of 12 th year	Min. 6 y.o.
CH-Y	As of 16 th year to end 21 st year	Min. 7 y.o.
CSI/CSIO-Y	As of 16 th year to end 21 st year	Min. 7 y.o.
CH-J	As of 14 th year to end 18 th year	Min. 7 y.o.
CSI/CSIO-J	As of 14 th year to end 18 th year	Min. 6 y.o.
CSI/CSIO-Ch/CH-Ch	As of 12 th year to end 14 th year	Min. 6 y.o.
CSI/CSIO-P/CH-P	As of 12 th year to end 16 th year Ponies must be registered as ponies with FEI	Min. 6 y.o.
CSIU-25	As of 16 th year to end 25 th year for all CSIU-25 comp. As of 14 th year if height max. 1.40m (to end 25 th year)	Min. 7 y.o.
CSIV	As of 45 th year	Min. 6 y.o.
CSIAm	As of 12 th year until end of 13 th year if competition height is max. 1.30 m; as of 14 th year if height exceeds 1.30 m.	Min. 6 y.o.
CSIYH	Per Art. 255.2	Min. 5 y.o. – Max. 8 y.o.
CH-M-YH-S	As of 18 th year or 16 year for athletes qualified with the same horse	5 y.o. / 6 y.o. / 7 y.o.

* Art. 254.1.1: Horses entered for CSIO2* Events at which the Nations Cup is built to the dimensions set forth in JRs Art. 264.3 for 2* Events must be at least 6 years old; Horses entered for CSIO2* Events at which the Nations Cup is built to the dimensions set forth in JRs Art. 264.3 for 3* Events or higher must be at least 7 years old.

DEDUCTIONS FROM PRIZE MONEY AT COMPETITIONS:

Full details of any deductions from prize money must be outlined in the schedule. This includes government taxes. If it is necessary for Organisers to deduct such taxes, they must provide participants with an official form indicating the amount of tax deducted.

The tax form must be provided to the athletes upon arrival and returned to the Organiser prior to departing.

Space for organiser to include details if necessary

IMPORTANT

The total amount of prize money shown for each Competition in the schedule must be distributed. (FEI General Regulations articles 127 and 128)

For details of the prize money breakdown for each competition please refer to the tables at the end of this document; the Organiser must specify which of the two (2) tables will be used. The total prize money for the Competition must be distributed among the first twelve (12) placed athletes.

The Organiser must provide additional created prizes for athletes placed beyond twelfth (12th) place. The minimum amount for each of these additional prizes, for athletes placed from thirteenth (13th) to last place, must be clearly specified in the approved schedule and not exceed the prize money of the athlete placed twelfth (12th)

10. MAXIMUM NUMBER OF STARTERS PER COMPETITION

***Annex VI FEI Jumping Rules:**

Maximum 100 starters per Competition other than the GP. If more than 100 starters are declared, the OC must provide the following percentages of additional prize money for every ten declared starters, up to 120 declared starters:

- 101 to 110 declared starters: the OC must provide 133% of the original Competition prize money, which is to be distributed among the 16 best placed athletes in the Competition according to the prize money distribution chart I or II. The additional prize money provided by the OC is not taken into consideration with regard to the overall prize money that determines the star level of the Event or the Longines Ranking point group of the Competition, if applicable.
- 111 to 120 declared starters: the OC must provide 166% of the original Competition prize money, which is to be distributed among the 20 best placed athletes in the Competition according to the prize money distribution chart I or II. The additional prize money provided by the OC is not taken into consideration with regard to the overall prize money that determines the star level of the Event or the Longines Ranking point group of the Competition, if applicable.

If more than 120 starters are declared, the OC must split the Competition into two groups and provide 200% of the original Competition prize money which is to be divided equally between the two groups. The additional prize money provided by the OC is not taken into consideration with regard to the overall prize money that determines the star level of the Event or the Longines Ranking point group of the Competition, if applicable.

OCs may apply either of the following methods for splitting the Competition:

The competition is split into two groups before it starts. There may be athletes with multiple horses in each group but all horses of any one athlete must be in the same group. If it is not

possible to have two groups of equal size there may be a different number of starters in each group;

OR

The competition is run as one single competition and split afterward into two groups and the classification established as follows: the athlete with the best score is the winner of the first group, the athlete with the second best score is the winner of the second group and so on until prizes have been allocated to 25% of the total number of starters. *NB: In this case separate results must be sent to the FEI for each of the two groups, e.g. results for Competition 1a and for Competition 1b.*

In both cases above each group must offer the same amount of prize money. For the avoidance of doubt, it is the number of declared starters in the Competition, not the final number of starters, that determines whether the Competition must be split.

If there are more than 200 declared starters, the OC must split the Competition into three groups and provide the same percentages of additional prize money as indicated above (100% of original Competition prize money to be provided for each of the three groups if each group has 100 or fewer starters; 133% of original prize money to be provided for each group if any of the three groups has 101-110 starters; 166% of original prize money to be provided for each if any of the three groups has 111-120 starters).

³ For CSI-W Events with a Grand Prix Competition in addition to the FEI World Cup™ competitions, the minimum prize money requirements indicated above for the Grand Prix apply only to the FEI World Cup™ Competition as it has the status of a Grand Prix; the Grand Prix Competition at such Events cannot offer more prize money than the prize money offered for the FEI World Cup™ Competition. Refer to the FEI Jumping World Cup™ rules for details relating to date of implementation of this rule at CSI-W Events.

11. GLOSSARY

***Glossary FEI Jumping Rules:**

Fees:

- Compulsory Fee: Compulsory Fees are fees that may be charged by the OC for costs/services not included in the Entry Fee. Compulsory Fees, if charged, must be paid by the Athletes concerned as outlined below. Only the following Compulsory Fees may be charged by the OC, providing full details of the amount to be charged is included in the Schedule and approved by the FEI:
 - NF fee if applicable
 - NF medication control programme fee if applicable
 - FEI EADCMR fee if applicable (OC to indicate in the Schedule if the EADCMR fee is included in the Entry Fee or not)
 - Fee for health/customs-related documents for Horses if these have been requested by the Athlete.
 - Fee for manure disposal (maximum € 40 per horse per Event)
 - Fee for lorry parking if applicable (The fee indicated in the Schedule may only be charged per lorry not per Athlete.)
 - Fee for electric hook-up for lorry (The fee indicated in the Schedule may only be charged per lorry, not per Athlete.)
- Discretionary Fee: Discretionary Fees are fees that may be charged for optional commodities/services that may be purchased by an Athlete if he so chooses and that do not affect the equity of the Athlete's right to compete at the Event or the well-being of the Horse, such as:
 - VIP or premium parking
 - VIP table
 - Extra box for tack or for non-competing Horse
 - Extra bedding and/or fodder (details to be included e.g. shavings, straw, hay)
 - Premium stabling (all stabling at the Event must meet minimum FEI requirements)

- Entry Fee: The Entry Fee is the fee charged to participate in an Event with one Horse and covers the following:
 - Stabling of one Horse for the duration of the Event (includes cleaning and disinfecting stables before the event, including between Events that are part of Tours, water and electricity in the stables, first bedding or a fixed amount of bedding depending on the type of event and 24 hour security services for the stables)
 - Use of all facilities at the Event (no infrastructure fees may be charged)
 - Right to participate in all Competitions in accordance with the conditions in the Schedule (no nomination fees or start fees may be charged)
 - Administrative/Office fees (includes all services relating to administration of the Event and running of the Competitions: data/results/timing services, bookkeeping and accreditation services)

XV. ANNEXES

1. FEI ENTRY SYSTEM

Please fill the form below in order to provide you and the other members of your committee or your IT Providers access to the FEI Entry System.

FEI ID¹: 10004896
Name*: Konarski
First Name*: Marcin
E-Mail*: office@stragona.pl
Access Rights*: ☒ Admin² ☐ Consult³
Events⁴: all

FEI ID¹: 10052103
Name*: Tarant
First Name*: Szymon
E-Mail*: tarantevents@gmail.com
Access Rights*: ☒ Admin² ☐ Consult³
Events⁴: all

FEI ID¹:
Name*:
First Name*:
E-Mail*:
Access Rights*: ☐ Admin² ☐ Consult³
Events⁴:

¹ If already have an FEI user account.

² Provides you the required access to manage entries and substitutions and download entries/lists.

³ You are just able to consult and download the entries/lists.

⁴ Leave the field blank if the user deals with the entries of all events in the show.

* **Mandatory Fields**

2. RESULTS

In order to proceed with the results publication and for qualification purposes the FEI requires results **to be uploaded directly on the FEI Database** within two days after the conclusion of the event.

All relevant information, file format and tutorial can be found on this page:

<https://inside.fei.org/fei/your-role/it-services/xml-format>

If you or your provider are unable to produce the required files, results will be accepted by e-mail to results@fei.org, in the proper Excel or "XML" format immediately after the event.

Please refer to compulsory format for CSIs/CSIOs/Championships and Games; the file can be downloaded using the following link:

<https://inside.fei.org/fei/your-role/it-services/results/jumping-results-forms>

All results must include FEI Passport Registration number of horses and FEI ID number of Riders.

Please note that as per Art. 109.6 (GR): OCs of International Jumping Events must inform the FEI and NFs whose teams or individuals have taken part, of the results and prize money paid to each placed Athlete and team, within two (2) days following the Event, unless otherwise specified for qualification and ranking reasons as communicated by the FEI. Failure from OCs of International Events to provide the FEI with the appropriate result(s) and/or prize money information by the aforesaid deadline and/or in the aforesaid format shall entail a warning for the first violation and thereafter a fine of CHF 1'000.- per violation.

The FEI may request a copy of the official PDF result signed by the relevant Officials at the Event.

THE APPENDIX (8 PAGES) IS PART OF THIS APPROVED AND SIGNED SCHEDULE AND MUST BE DISTRIBUTED TO ALL OFFICIALS AND NFs AND IS AVAILABLE TO OTHERS UPON REQUEST